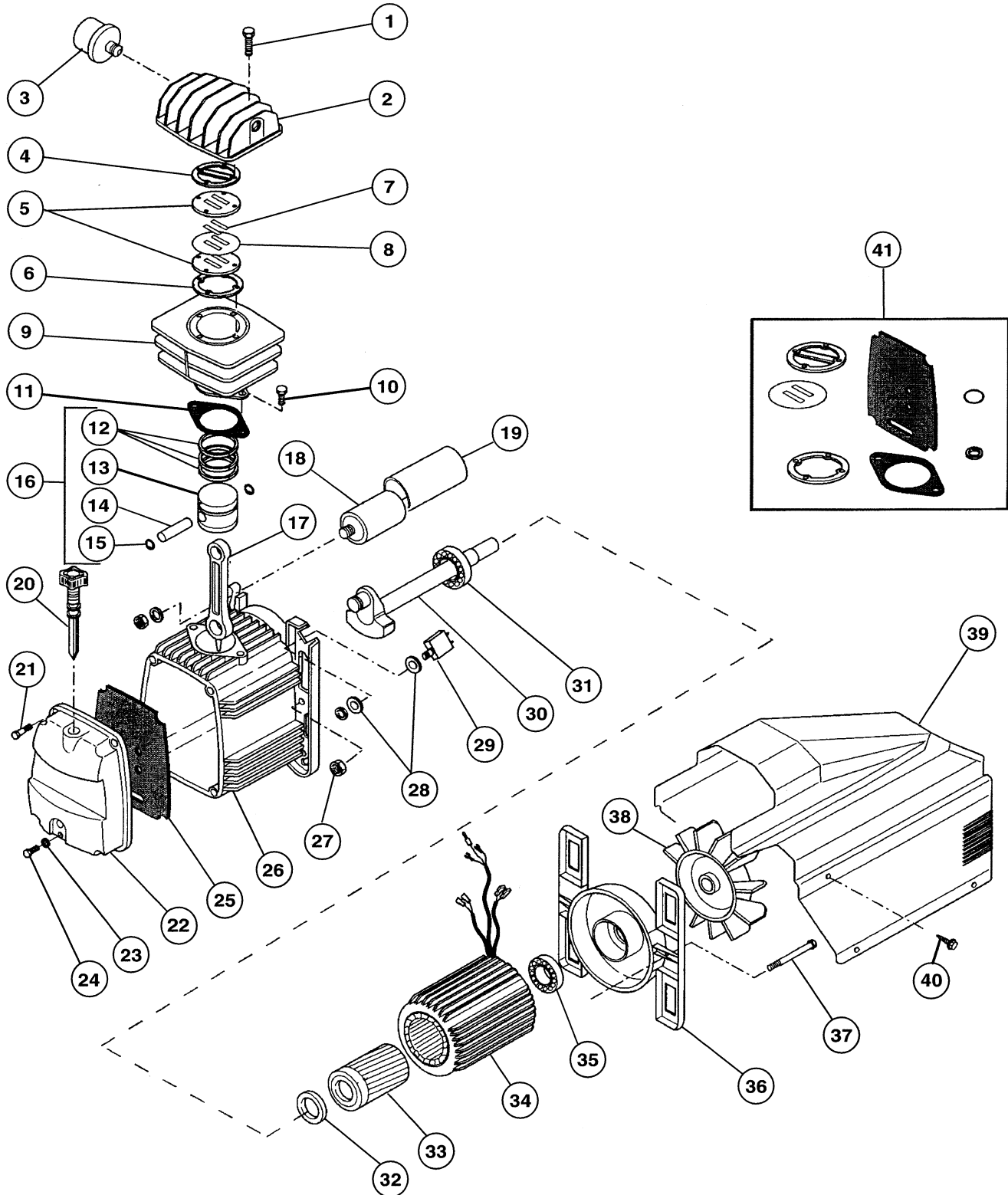


Rel-Air

SCHEMATIC FOR MODEL PMP11MK246FC





Associate Engineering Corporation
 606 S. Lake Street, P O Box 346
 Hustisford Wisconsin 53034-0346
 Phone: 920-349-3281
 Service Fax: 920.349.8861 Sales Fax: 920.349.3691
www.rolair.net

PARTS LIST FOR PMP11MK246FC

Schematic #	Description	Part #	Qty.
1	Head Bolt	FC014002021	4
2	Head	FC116022002	1
3	Intake Filter (Mdl's FC2002, FC2002HBP6) (Mdl D2002HPV5)	FC317007000 317013000F	1 1
4	Head Gasket	FC116022007	1
5	Valve Plate	FC116022013	2
6	Gasket	FC116022014	1
7	Reed Valve	FC116022038	2
8	Valve Plate Gasket	FC116022012	1
9	Cylinder	FC116093009	1
10	Bolt	FC014011064	2
11	Gasket	FC116091015	1
12	Ring Set	FC216022002	1
13	Piston	FC116022004	1
14	Piston Pin	FC116022040	1
15	Snap Ring	FC015001000	2
16	Complete Piston Assembly (Includes: Ring Set, Piston, Piston Pin, and Snap Rings)	FC416022004	1
17	Connecting Rod	FC116091021	1
18	Capacitor	FC009200075	1
19	Capacitor Cover	FC116034013	1
20	Dipstick	FC312043000	1
21	Screw	FC014013021	4
22	Crankcase Cover	FC116091002	1
23	Gasket	FC010072000	1
24	Oil Drain	FC014013024	1
25	Gasket	FC116091011	1
26	Motor Housing	FC116091001	1
27	Nut	FC014003002	2
28	Washer	MIS10103	2
29	Manual Reset	FC008332000	1
30	Crankshaft	FC116022011	1
31	Bearing	FC033027000	1
32	Seal	FC010029000	1
33	Rotor	FC116092003	1
34	Stator	FC16QC4652	1
35	Bearing	FC033005000	1
36	End Bell	FC116011002	1
37	Thru-Bolt	FC116011038	2
38	Fan	FC116001003	1
39	Shroud	FC116QC0001	1
40	Screw	FC014006121	2
41	Gasket Set	FC216093003	1