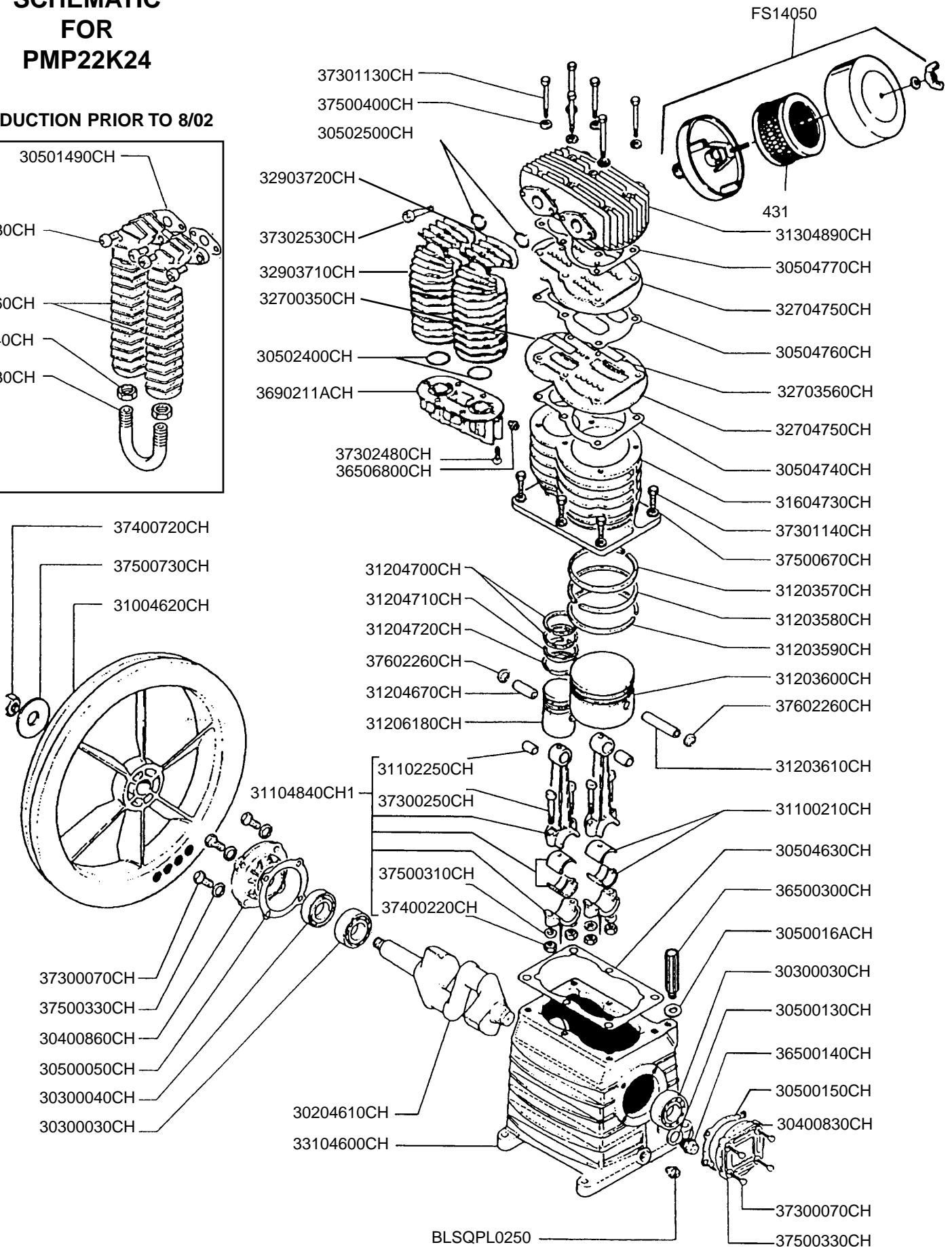
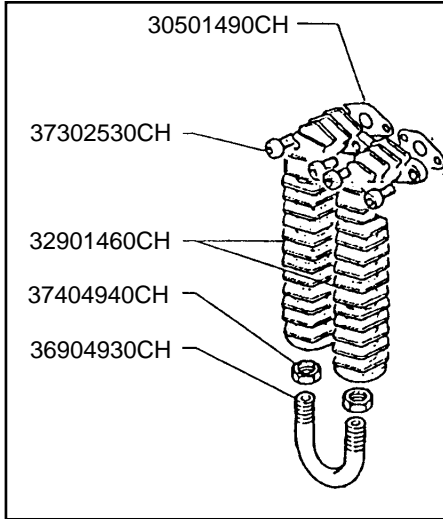


SCHEMATIC FOR PMP22K24

PRODUCTION PRIOR TO 8/02





Associate Engineering Corporation

606 S. Lake Street P.O. Box 346

Hustisford, Wisconsin 53034-0346

Phone: 920-349-3281

Sales Fax: 920.349.3691 Service Fax: 920.349.8861

www.rolair.net

PARTS LIST FOR PMP22K24

| Description | Part # | Qty. |
|-----------------------------------------------|-------------|------|
| Crankshaft | 30204610CH | 1 |
| Ball Bearing | 30300030CH | 2 |
| Oil Seal | 30300040CH | 1 |
| Bearing Carrier | 30400830CH | 1 |
| Bearing Carrier | 30400860CH | 1 |
| Gasket | 30500050CH | 1 |
| Gasket | 30500130CH | 1 |
| Gasket | 30500150CH | 1 |
| 3/8" Hole Gasket | 3050016ACH | 1 |
| "O" Ring – Intercooler/Connector | 30502400CH | 2 |
| "O" Ring – Intercooler/Head | 30502500CH | 2 |
| Gasket | 30504630CH | 1 |
| Gasket | 30504740CH | 1 |
| Gasket | 30504760CH | 1 |
| Gasket | 30504770CH | 1 |
| Flywheel | 31004620CH | 1 |
| Bearing Shell | 31100210CH | 2 |
| Bushing* | 31102250CH | 2 |
| Connecting Rod w/ upper bushing & inserts | 31104840CH1 | 2 |
| Compression Ring LP | 31203570CH | 1 |
| Stepped Scraper Ring LP | 31203580CH | 1 |
| Slotted Oil Ring LP | 31203590CH | 1 |
| Piston LP | 31203600CH | 1 |
| Piston Pin LP | 31203610CH | 1 |
| Piston Pin HP | 31204670CH | 1 |
| Compression Ring HP | 31204700CH | 2 |
| Stepped Scraper Ring HP | 31204710CH | 1 |
| Slotted Oil Ring HP | 31204720CH | 1 |
| Piston HP | 31206180CH | 1 |
| Cylinder Head | 31304890CH | 1 |
| Cylinder | 31604730CH | 1 |
| Valve HP | 32700350CH | 2 |
| Valve LP | 32703560CH | 2 |
| Valve Plate | 32704750CH | 2 |
| Left Intercooler | 32903710CH | 1 |
| Right Intercooler | 32903720CH | 1 |
| Crankcase | 33104600CH | 1 |
| Oil Sight Gauge | 36500140CH | 1 |
| 3/8" Breather/Oil Fill Plug | 36500300CH | 1 |
| Plug | 36506800CH | 1 |
| Intercooler Connector | 3690211ACH | 1 |
| Bolt | 37300070CH | 8 |
| Bolt | 37300250CH | 4 |
| Bolt | 37301130CH | 6 |
| Bolt | 37301140CH | 6 |
| Bolt | 37302480CH | 6 |
| Bolt | 37302530CH | 4 |
| Nut | 37400220CH | 4 |
| Nut | 37400720CH | 1 |
| Washer | 37500310CH | 4 |
| Washer | 37500330CH | 8 |
| Washer | 37500400CH | 6 |
| Washer | 37500670CH | 6 |
| Washer | 37500730CH | 1 |
| Snap Ring | 37602260CH | 4 |
| Filter Element | 431 | 1 |
| 1/4" Square Head Plug | BLSQPL0250 | 1 |
| Filter Assembly | FS14050 | 1 |
| Ring Set | K24RINGS | 1 |
| Gasket Set | K24GASKETS | 1 |
| Valve Plate Assembly | 2400VK24 | 1 |
| INTERCOOLER PARTS PRIOR TO AUGUST 2002 | | |
| Gasket | 30501490CH | 2 |
| Intercooler | 32901460CH | 2 |
| Intercooler Connector | 36904930CH | 1 |
| Bolt | 37302530CH | 4 |
| Nut | 37404940CH | 2 |

*Bushing is not machined to fit piston pin if ordered separate from connecting rod.