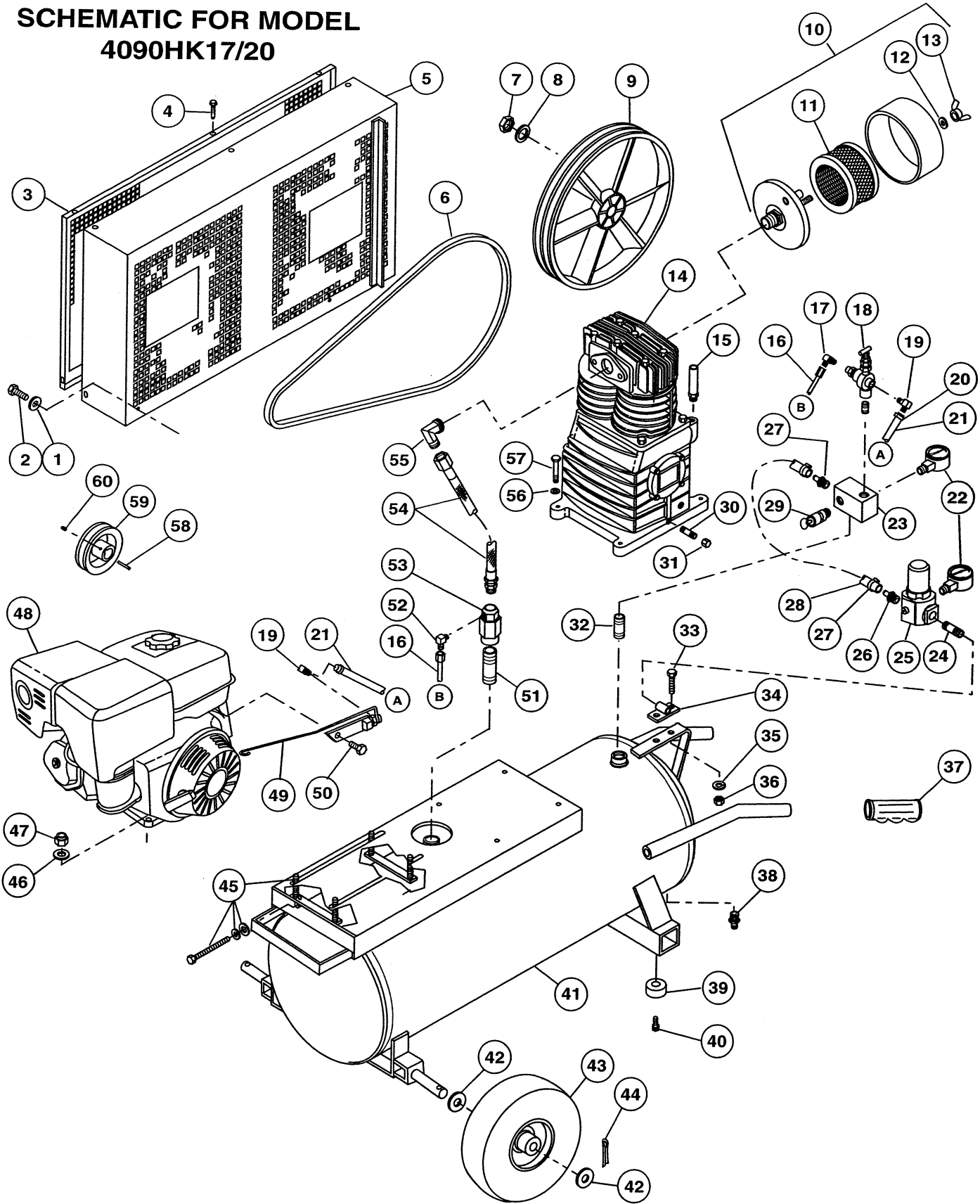


# Rol-Air

SCHEMATIC FOR MODEL  
4090HK17/20





**Associate Engineering Corporation**  
 606 S. Lake Street, P.O. Box 346  
 Hustisford Wisconsin 53034-0346  
 Phone: 920-349-3281  
 Sales Fax: 920.349.3691 Service Fax: 920.349.8861  
[www.rolair.net](http://www.rolair.net)

## PARTS LIST FOR MODEL 4090HK17/20

Schematic #	Description	Part #	Qty.
1	1 3/8" Flat Washer	MIS10108	2
2	5/16" x 1 1/4" Bolt	MIS10023	2
3	Belt Guard Cover	BG8145	1
4	Spinlock Bolt	MIS10094	5
5	Belt Guard Base	BG8140B	1
6	Belt	BT4L510	1
7	Nut	37400720CH	1
8	Washer	37500730CH	1
9	Flywheel	31007280CH	1
10	Filter/Silencer Assembly	FS14050	1
11	Intake Element	431	1
12	Washer	FSWASHER	1
13	Wing Nut	FSNUT	1
14	Pump w/Flywheel & Aftercooler	PMP12K17CH	1
	Pump less Flywheel & Aftercooler	PMP12K17CHLF	1
15	3/8" Breather/Oil Fill Plug	36507050CH	1
16	1/4" Copper Tubing - 24"	MIS11100	2
	Brass Nut	BRNT0250	2
	Brass Compression Ring	BRRG0250	2
17	Brass Elbow	BREL0250X025039	1
18	Pilot Unloader Valve	131BIG	1
19	Brass Elbow	BREL0250X0125H16	2
20	Hose Clamp	177	2
21	1/4" Rubber Hose - 24"	178	2
22	1/4" Gauge - 200 PSI	GA2050200	2
23	Aluminum Block Manifold	154	1
24	3/8" x 1 1/2" Nipple	BLNP0375X1500	1
25	Regulator	REG0375	1
26	3/8" Brass Coupler	BRCP0375X0375H12	2
27	Hose Clamp	177A	2
28	3/8" Rubber Hose - 16"	178A	1.25'
29	Safety Relief Valve	SRV0250N165	1
30	1/4" x 1 1/2" Nipple	BLNP0250X1500	1
31	1/4" Cap	BLCA0250	1
32	1/2" x 1 1/2" Nipple	BLNP0500X1500	1
33	5/16" x 7/8" Bolt	MIS10022	2
34	Accessory Bracket	210	1
35	5/16" Lock Washer	MIS10099	2
36	5/16" Nut	MIS10020	2
37	Handle Grip	328	2
38	Drain Valve	132B	1
39	Rubber Foot	219	4
40	1/4" x 1" Self-Tapping Screw	MIS10008	4
41	Tank Assembly	TNKASY4090K17/20	1
42	Machine Bushing	MIS10104	4
43	Wheel	WLS30SEAL	2
44	Cotter Pin	181A	2
45	Belt Tightener/Mounting Kit	SBT5HP-ANGLE	1
46	1/4" Flat Washer	MIS10102	4
47	5/16" Lock Nut	MIS10020B	4
48	Engine - 5.5 HP Honda	ENG05H01	1
49	Throttle Control Kit	192EGX160K1QX	1
50	Flange Bolt	HON90013-883-000	1
51	1/2" x 1 1/2" Nipple	BLNP0500X1500	1
52	Brass Elbow	BREL0250X0125H16	1
53	Check Valve	CV4X4L1	1
54	Braided Discharge Tube	145A	1
55	Brass Elbow	145D	1
56	5/16" Lock Washer	MIS10099	4
57	5/16" x 1 1/4" Bolt	MIS10023	4
58	Keystock	MIS10095C	1
59	Engine Pulley	PUAK44X0750	1
60	Setscrew	MIS10020C	1