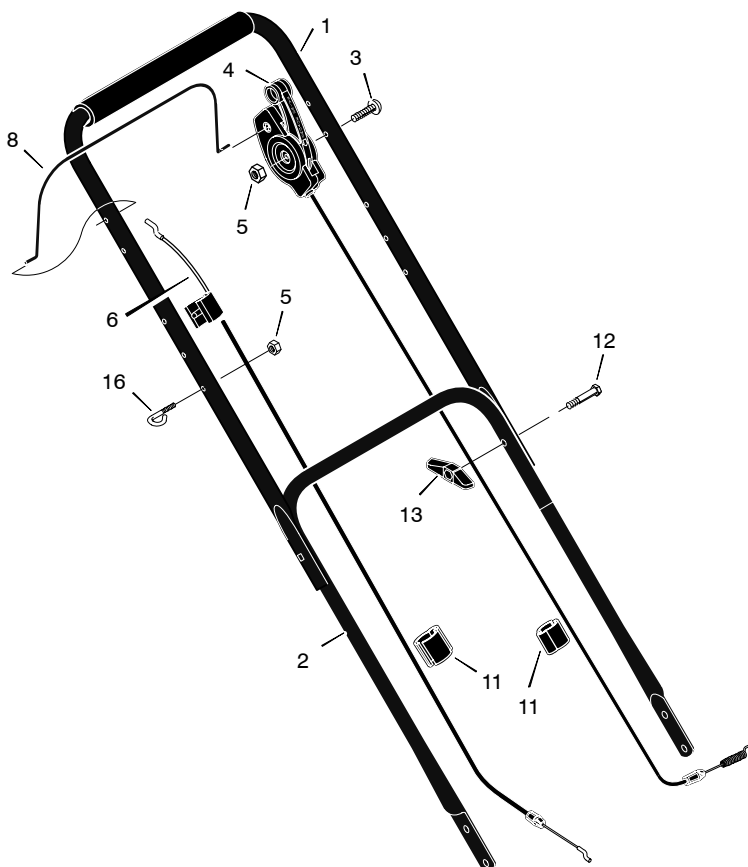


HANDLE – RECOIL–START MODELS



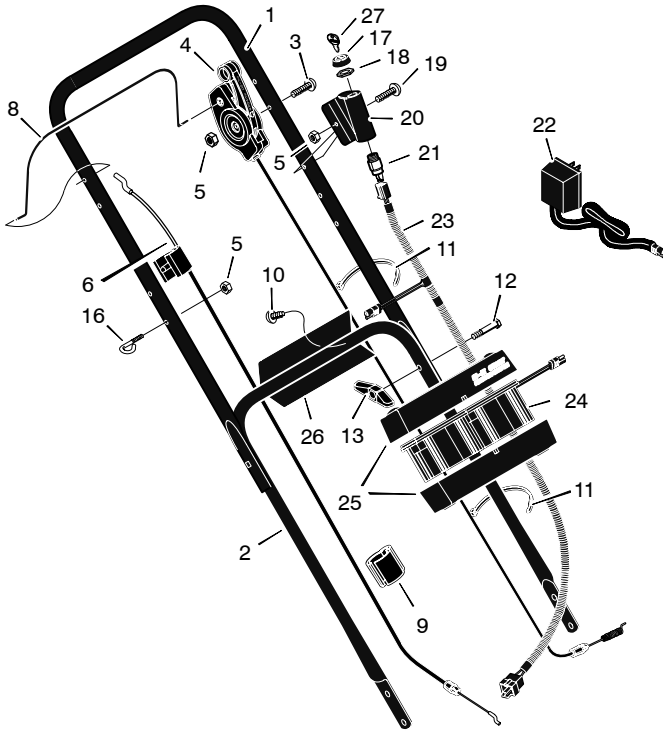
KEY NO.	DESCRIPTION	PART NO.	KEY NO.	DESCRIPTION	PART NO.
1	Handle, Upper (Black)	1101557E701	6	Cable, Stop *	1101365
	Handle, Upper (Gray)	1101557E724		Cable, Stop #	1101366
2	Handle, Lower (Black)	672906E701		Cable, Stop +	1101365
	Handle, Lower (Gray)	672906E724	8	Lever, Stop	1101076E701
3	Bolt	025x14	11	Fastener, Cable	1101353
4	Control, Drive	1101670	12	Bolt	002x77
5	Locknut	15x116	13	Knob	071294
			16	Guide, Rope	071530

* Used on Briggs & Stratton Quantum engines.

Used on Tecumseh engines.

+ Used on Briggs & Stratton Classic, Sprint & Quattro, Q-Style and QS-Style engines.

HANDLE – ELECTRIC-START MODELS



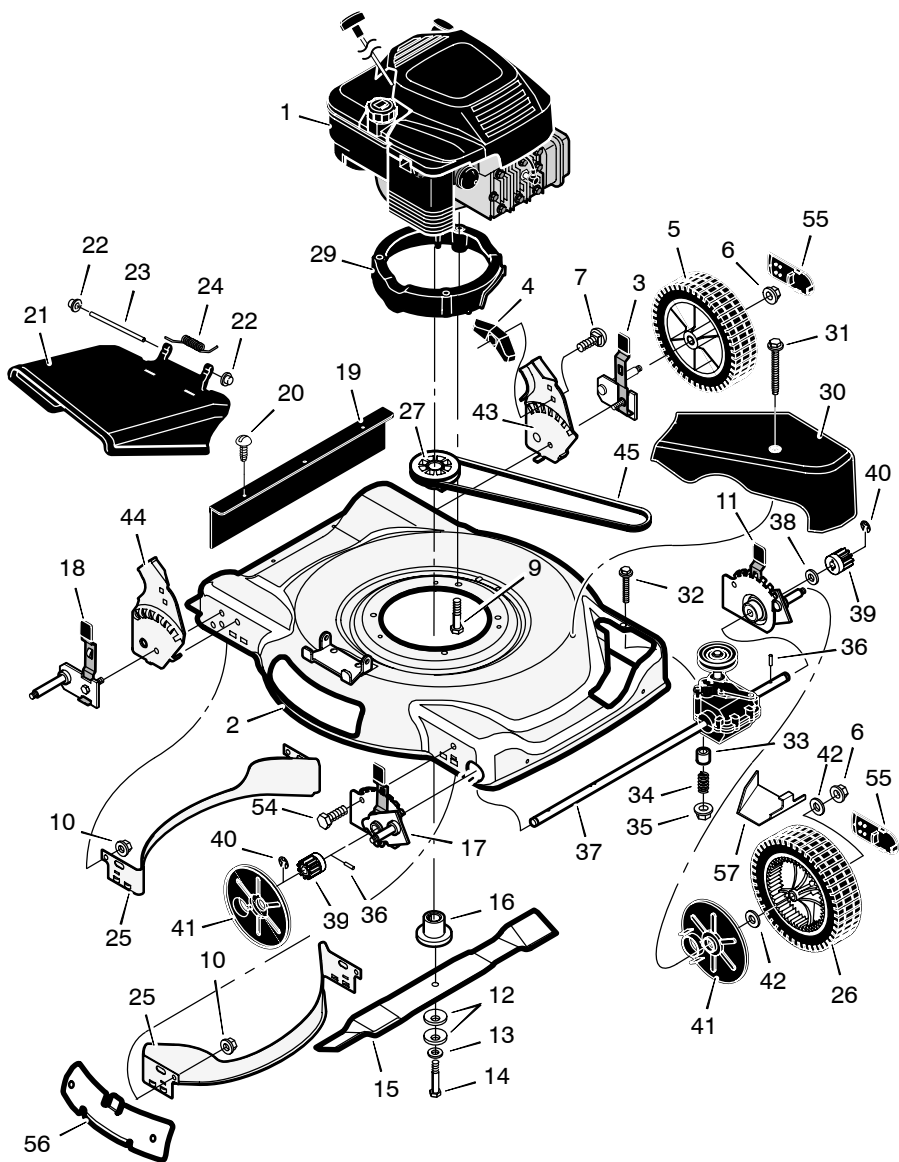
KEY NO.	DESCRIPTION	PART NO.	KEY NO.	DESCRIPTION	PART NO.
1	Handle, Upper (Black)	1101557E701	12	Bolt	002x77
	Handle, Upper (Gray)	1101557E724	13	Knob	071294
2	Handle, Lower (Black)	672907E701	16	Guide, Rope	071530
	Handle, Lower (Gray)	672907E724	17	Cap	091488
3	Bolt	025x14	18	Nut	091489
4	Control, Drive	1101670	19	Bolt	3x136
5	Locknut	15x116	20	Cover, Ignition	671916
6	Cable, Stop *	1101365	21	Switch Ignition & Key	776011
	Cable, Stop #	1101366	22	Charger, Battery	671992
	Cable, Stop +	1101365	23	Harness, Wiring	776012
8	Lever, Stop	1101076E701	24	Battery	776014
9	Fastener, Cable	1101353	25	Case, Battery	776013
10	Screw	26x220	26	Bracket, Battery	671959
11	Tie, Cable	071372	27	Key, Ignition	672220

* Used on Briggs & Stratton Quantum engines.

Used on Tecumseh engines..

+ Used on Briggs & Stratton Classic, Sprint & Quattro, Q-Style and QS-Style engines.

MODELS WITH STANDARD WHEELS



MODELS WITH STANDARD WHEELS

KEY NO.	DESCRIPTION	PART NO.	KEY NO.	DESCRIPTION	PART NO.
1	Engine	--- * ---	28	Pin, Spring	032x64
2	Housing	7501039	29	Base, Engine (Black)	1101786
3	Height Adjuster, Left Rear	672641		Base, Engine (Gray)	1101787
4	Knob	071495	30	Cover, Belt (Black)	1101830
5	Wheel and Tire, Rear #	-----		Cover, Belt (Gray)	1101831
6	Locknut, Flange	015x84	31	Screw	26x313
7	Bolt, Carriage	002x81	32	Bolt	01x118
9	Bolt, Engine	025x11	33	Spacer	043844
10	Nut	015x68	34	Spring	164x27
11	Height Adjuster, Left Front	672643	35	Nut	015x88
12	Washer, Belleville	17x137	36	Pin, Drive	043629
13	Washer	17x124	37	Transmission	1101571
14	Bolt, Hex	01x148	38	Washer	17x186
15	Blade, Side Discharge Blade, Mulcher	042225E701 1101120E701	39	Gear, Pinion	071792
16	Adapter, Blade	672094	40	E-Ring	011x16
17	Height, Adjuster, Right Frt.	672642	41	Cover, Dust	071780
18	Height, Adjuster, Right Rr.	672640	42	Washer	17x169
19	Guard, Rear	672738	43	Bracket, Left Handle	1101303E700
20	Screw	26x245	44	Bracket, Right Handle	1101302E700
21	Deflector, Chute	672421	45	Belt, Briggs & Stratton Belt, Tecumseh	37x123
22	Push-On Cap	028x42	54	Bolt	001x85
23	Pin, Pivot	215x11 Z	55	Hub Cap	043615
24	Spring	0166x5	56	Plate, Mulch - <i>Optional</i>	672422 Z
25	Baffle	672744E701	57	Cover, Transmission	1101961
26	Wheel and Tire, Drive #	-----	-	Book, Instruction	F-040408L
27	Pulley	1101653			

* Parts are available from an Authorized Engine Service Center. See "Engines, Gasoline" or "Gasoline Engines" in the yellow pages of the telephone directory.

See the "Wheel And Tire Parts List" page.

MODELS WITH 14" REAR WHEELS

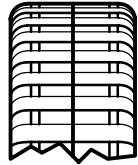
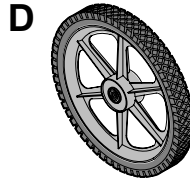
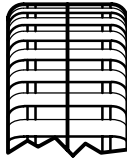
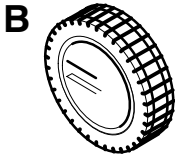
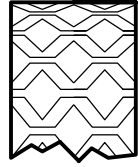
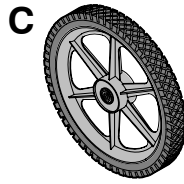
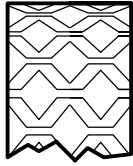
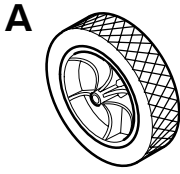
KEY NO.	DESCRIPTION	PART NO.	KEY NO.	DESCRIPTION	PART NO.
1	Engine	--- * ---	29	Base, Engine (Black)	1101786
2	Housing	7501038		Base, Engine (Gray)	1101787
3	Height Adjuster, Left Rear	672645	30	Cover, Belt (Black)	1101830
4	Knob	071495		Cover, Belt (Gray)	1101831
5	Wheel and Tire, Rear #	-----	31	Screw	26x313
6	Locknut, Flange	015x84	32	Bolt	01x118
7	Bolt, Carriage	002x81	33	Spacer	043844
9	Bolt, Engine	025x11	34	Spring	164x27
10	Nut	015x68	35	Nut	015x88
11	Height Adjuster, Left Front	672643	36	Pin, Drive	043629
12	Washer, Belleville	17x137	37	Transmission	1101571
13	Washer	17x124	38	Washer	17x186
14	Bolt, Hex	01x148	39	Gear, Pinion	071792
15	Blade, Side Discharge Blade, Mulcher	042225E701 1101120E701	40	E-Ring	011x16
16	Adapter, Blade	672094	41	Cover, Dust	071780
17	Height, Adjuster, Right Frt.	672642	42	Washer	17x169
18	Height, Adjuster, Right Rr.	672644	43	Bracket, Left Handle	1101305E700
19	Guard, Rear	672738	44	Bracket, Right Handle	1101304E700
20	Screw	26x245	45	Belt, Briggs & Stratton Belt, Tecumseh	37x123
21	Deflector, Chute	672421	54	Bolt	001x85
22	Push-On Cap	028x42	55	Hub Cap	043615
23	Pin, Pivot	215x11 Z	56	Plate, Mulch - <i>Optional</i>	672422 Z
24	Spring	0166x5	57	Washer	017x67 Z
25	Baffle	672744E701	58	Knob, Axle	672449
26	Wheel and Tire, Drive #	-----	59	Brace	672728E700
27	Pulley	1101653	60	Screw	26x263
28	Pin, Spring	032x64	61	Cover, Transmission	1101961
			-	Book, Instruction	F-040408L

* Parts are available from an Authorized Engine Service Center. See "Engines, Gasoline" or "Gasoline Engines" in the yellow pages of the telephone directory.

See the "Wheel And Tire Parts List" page.

WHEELS AND TIRES

Look at the illustrations. Select the wheel and the tire you want and order from the following chart.



WHEEL SIZE & TYPE	A	B	C	D
6-inch Plastic, White	672788	—	—	—
6-inch Plastic, Gray	672789	—	—	—
7-inch Plastic, White	020270	—	—	—
7-inch Plastic, Gray	071597	—	—	—
8-inch Plastic, White	020271	—	—	—
8-inch Plastic, Gray	672060	071132	—	—
8-inch Ball Bearing, Gray	—	071134	—	—
14-inch, Gray	—	—	672074	071841
14-in, Ball Bearing, Gray	—	—	672062	071840