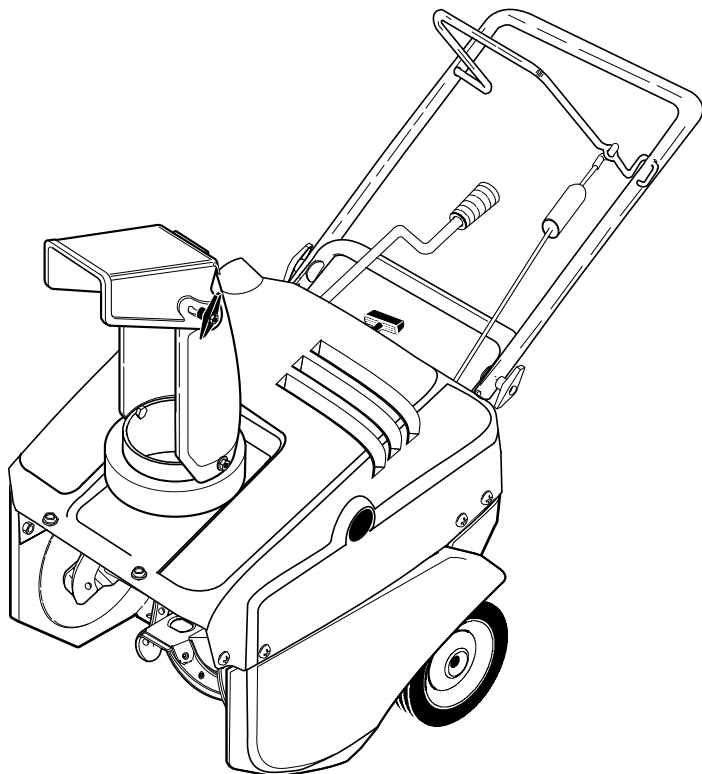


- (GB)** Parts List - Model 621501x31NB
- (F)** Liste de pièces - Modèle 621501x31NB
- (D)** Teileliste - Modell 621501x31NB
- (I)** Elenco pezzi - Modello 621501x31NB
- (NL)** Lijst van onderdelen - Model 621501x31NB
- (DK)** Rolle Liste - Model 621501x31NB
- (N)** Deleliste - Modell 621501x31NB
- (S)** Reservdelista - Modell 621501x31NB
- (SF)** Varaosaluettelo - Malli 621501x31NB
- (E)** Lista de partes - Modelo 621501x31NB
- (EE)** Osa nimekiri - Mudel 621501x31NB
- (GR)** Κατάλογος μερών - πρότυπο 621501x31NB
- (H)** Tartalékalkatrészek - Modell 621501x31NB
- (LV)** Pars caudex - Model 621501x31NB
- (LT)** Dalių sąrašas - Modelis 621501x31NB
- (PL)** Części zamienne - Model 621501x31NB
- (CZ)** Součástky výkaz - Model 621501x31NB
- (SK)** Del seznam - Modelu 621501x31NB
- (RU)** Список Частей - Модель 621501x31NB

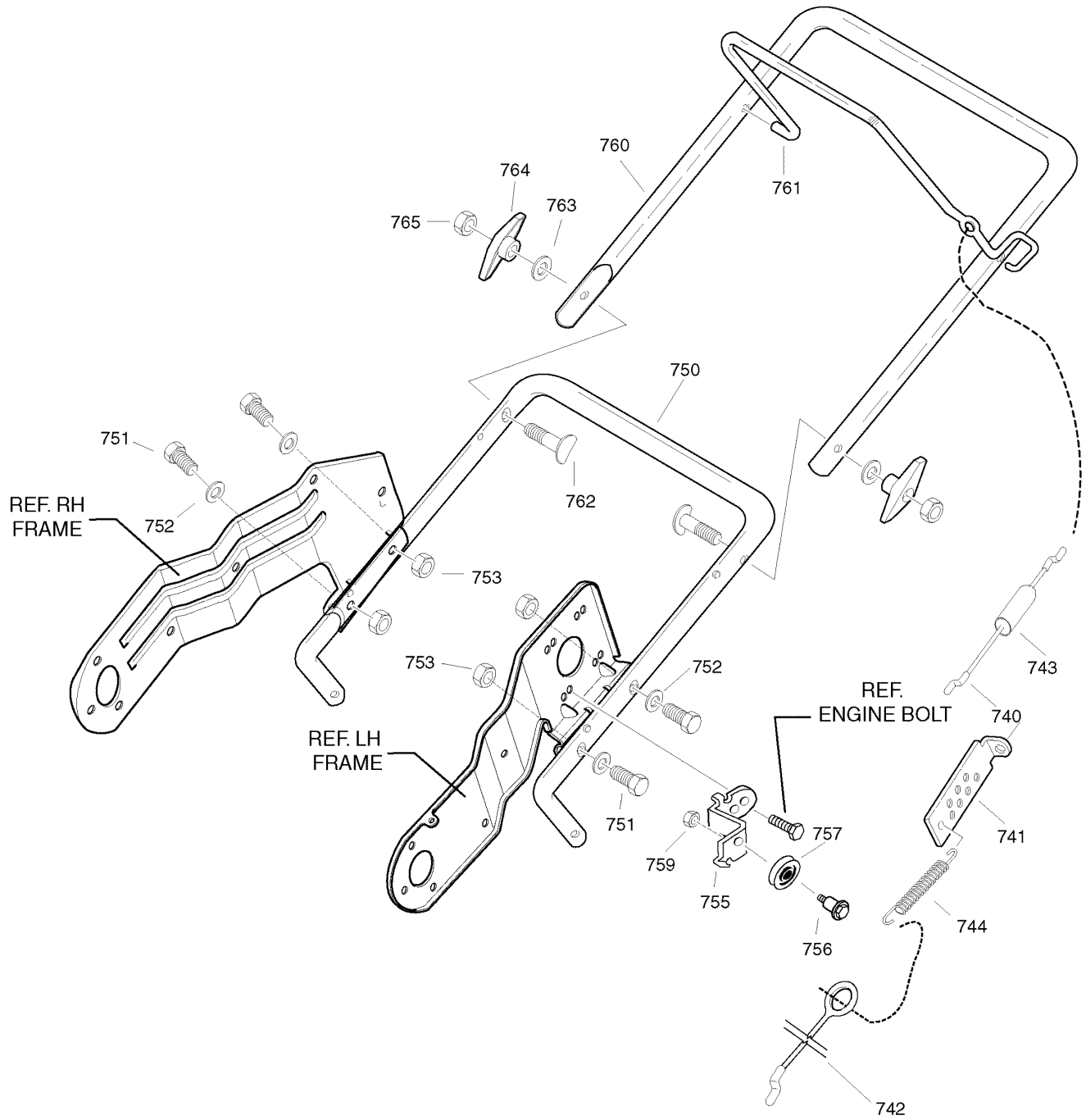


PRODUCT COMPONENTS	PAGES
Handle Assembly	4
Engine Assembly	6
Frame Components Assembly	8
Auger Housing	10
Discharge Chute	12
Chute Rod Assembly	14
Decals	16
Wheels	18
Top Cover Assembly	20
Torque Specification Chart	Inside Back Cover

Handle Assembly

0007

NOTE: Unless noted otherwise,
use the standard hardware torque
specification chart.



The above parts group applies to the following Mfg. Nos.:
621501x31NB 109-947, Single Stage Snow Thrower

Handle Assembly

REF NO	PART NO.	DESCRIPTION
740	760774MA	CABLE, UPPER
741	313441MA	BRACKET, CABLE ADJUST
742	760773MA	CABLE, LOWER CONTROL
743	308146MA	BOOT, CLUTCH SPRING
744	313471MA	SPRING, EXTENSION
750	333909E701MA	HANDLE, LOWER
751	313674MA	SCREW, 1/4-20 X 1.25
752	71067MA	WASHER, FLAT
753	73826MA	NUT, 1/4-20
755	761486E701MA	BRACKET, CABLE
756	712234MA	BOLT
757	39298MA	PULLEY
759	15X143MA	NUT, 1/4-20 YZ
760	333919E701MA	UPPER HANDLE
761	313308E701MA	BAIL, CONTROL
762	337584MA	BOLT
763	311936MA	WASHER, FORM
764	57171MA	KNOB, T 3.00 WD
765	71037MA	NUT, 5/16-18

Footnotes

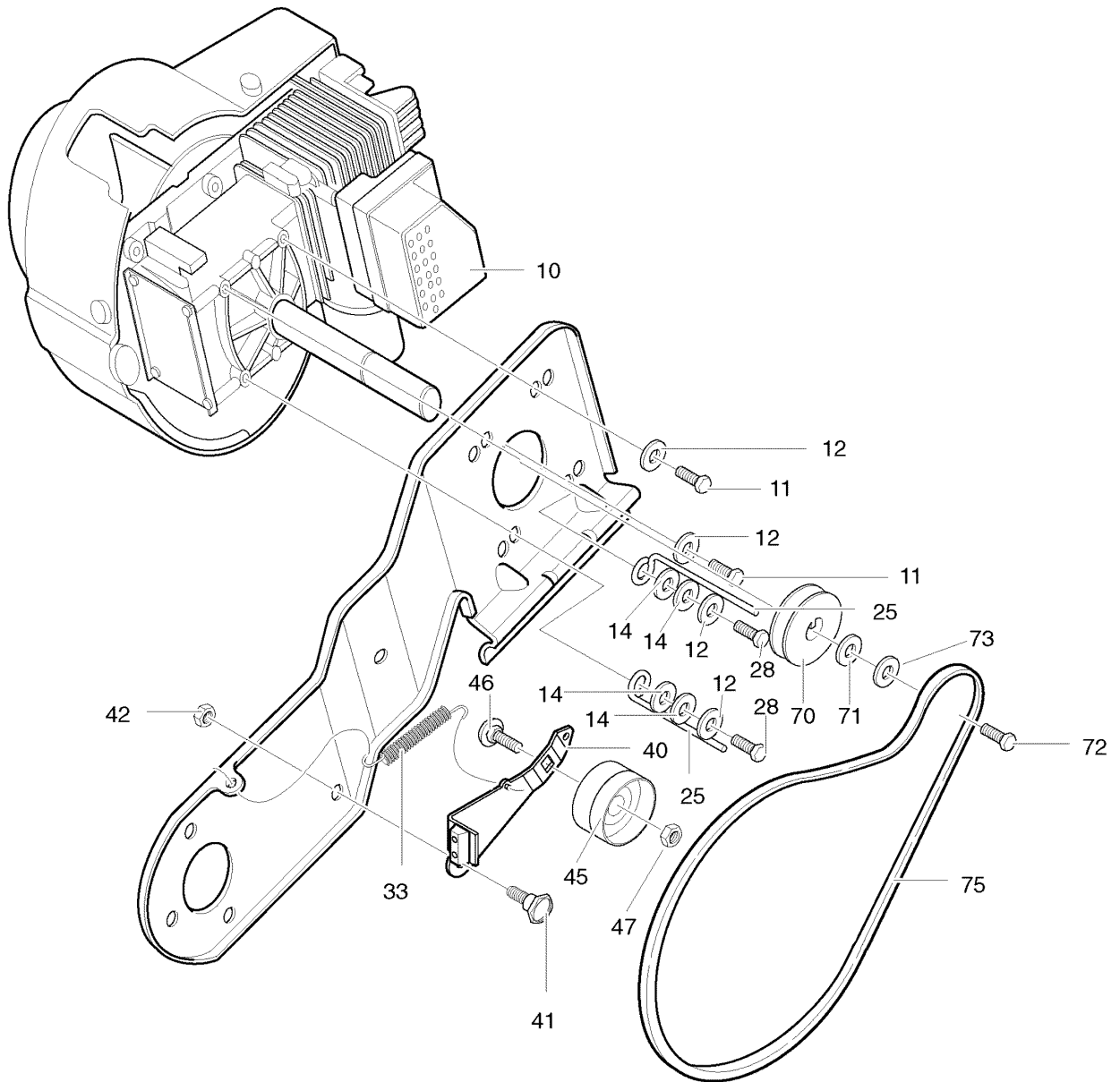
The above parts group applies to the following Mfg. Nos.:

621501x31NB 109-947, Single Stage Snow Thrower

Engine Assembly

0003

NOTE: Unless noted otherwise,
use the standard hardware torque
specification chart.



The above parts group applies to the following Mfg. Nos.:
621501x31NB 109-947, Single Stage Snow Thrower

Engine Assembly

REF NO	PART NO.	DESCRIPTION
10	-----	ENGINE
11	313676MA	SCREW, 5/16-18 X .75
12	71060MA	WASHER
14	71071MA	WASHER, FLAT
25	313440MA	GUIDE, BELT
28	710312MA	SCREW
33	339017MA	SPRING, IDLER BRAKE
40	1501013MA	ASSY, IDLER BRAKE ARM
41	333594MA	BOLT
42	71391MA	NUT, 5/16-18
45	48924MA	PULLEY, IDLER
46	45892MA	BOLT, CARRIAGE
47	590MA	NUT
70	338849MA	PULLEY, ENGINE
71	25840MA	WASHER, BELLEVILLE
72	181595MA	SCREW, 5/16 - 24 X .75
73	71060MA	WASHER, SPLIT LOCK
75	37x132MA	BELT V 3L 34.8"
--	1740271SM	OPERATOR'S MANUAL

Footnotes

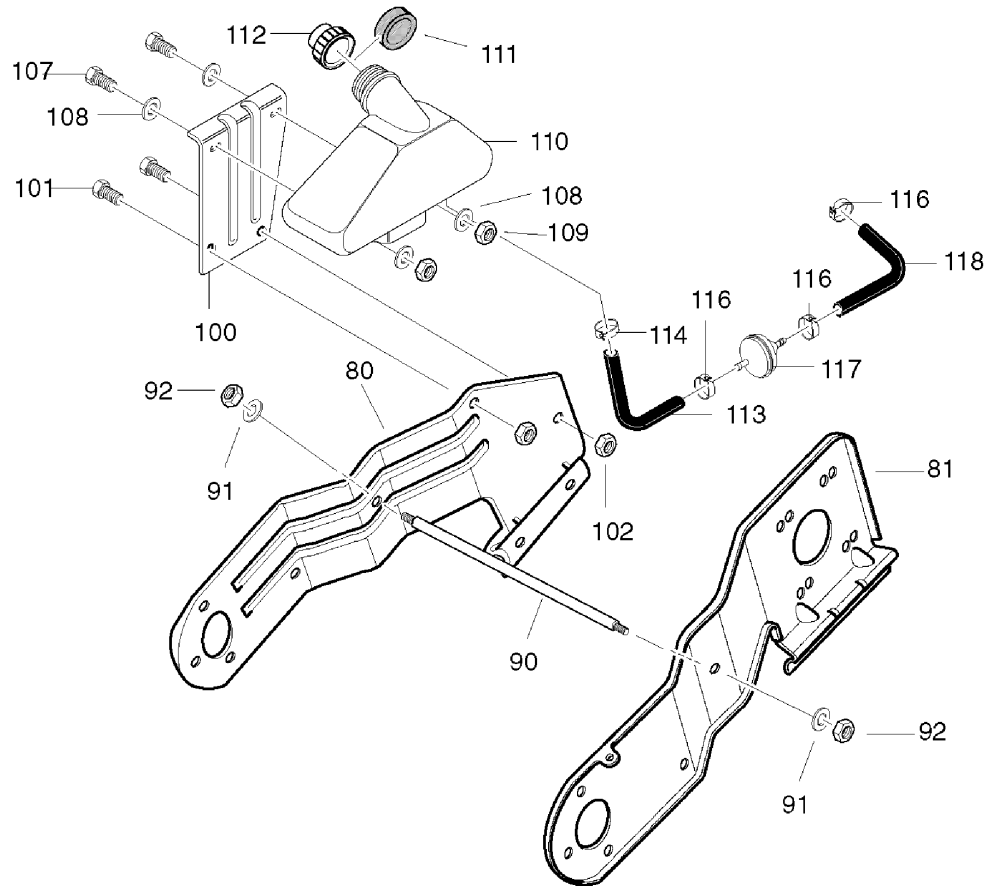
The above parts group applies to the following Mfg. Nos.:

621501x31NB 109-947, Single Stage Snow Thrower

Frame Components Assembly

0015

NOTE: Unless noted otherwise,
use the standard hardware torque
specification chart.



The above parts group applies to the following Mfg. Nos.:

621501x31NB 109-947, Single Stage Snow Thrower

Frame Components Assembly

REF NO	PART NO.	DESCRIPTION
80	760272E701	FRAME, SIDE SUPT STEEL RH
81	760271E701MA	FRAME, SIDE SUPT STEEL LH
90	760168MA	ROD, SUPPORT
91	71063MA	WASHER
92	71044MA	NUT, 3/8-16 HEX
100	333749E701MA	BRACKET, GAS TANK
101	302628MA	SCREW, 1/4-20 X .75
102	73826MA	NUT, 1/4-20 HEX
107	302628MA	SCREW, 1/4-20 X .75
108	71067MA	WASHER, FLAT
109	73826MA	NUT, 1/420 HEX
110	333739MA	TANK, FUEL
111	762224MA	RING, FOAM FUEL TANK
112	340299MA	CAP, GAS
113	323363MA	TUBING 8 INCH
114	47345MA	CLAMP, HOSE SCREW
116	323387MA	CLAMP, HOSE
117	56679MA	FILTER IN LINE
118	335906MA	TUBING, 6 INCH

Footnotes

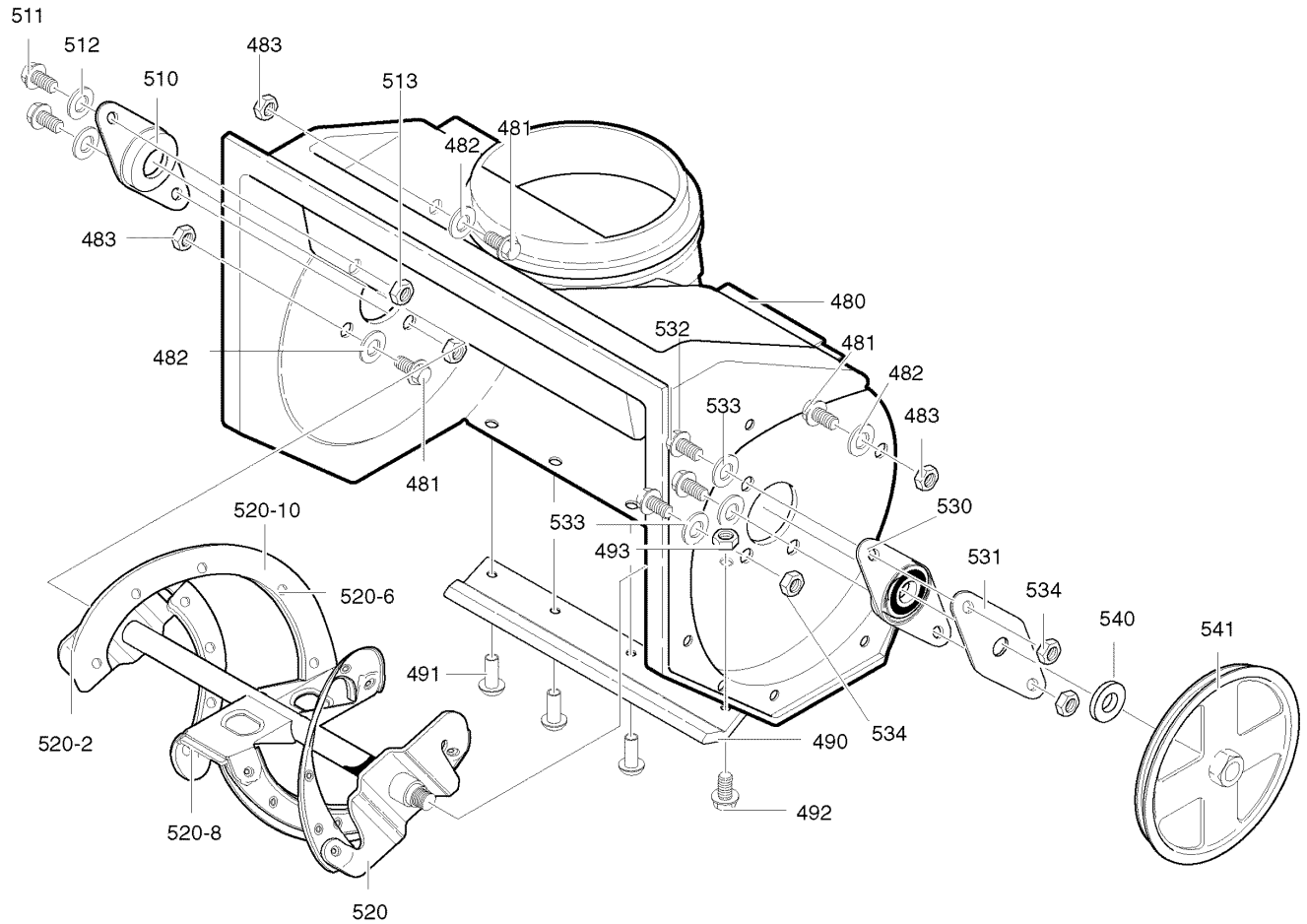
The above parts group applies to the following Mfg. Nos.:

621501x31NB 109-947, Single Stage Snow Thrower

Auger Housing

0005

**NOTE: Unless noted otherwise,
use the standard hardware torque
specification chart.**



The above parts group applies to the following Mfg. Nos.:
621501x31NB 109-947, Single Stage Snow Thrower

Auger Housing

REF NO	PART NO.	DESCRIPTION
480	340091MA	HOUSING, ASSEMBLY
481	302628MA	SCREW, 1/4-20 X .75
482	71067MA	WASHER, FLAT .281 X .63 X .065
483	15X143MA	NUT, HEX 1/4-20 YZ
490	55323MA	BLADE, SCRAPER
491	577707MA	RIVET, OFFSET
492	302628MA	SCREW, 1/4-20 X .75
493	15X143MA	NUT, 1/4-20 YZ
510	577023MA	BEARING, FLANGE
511	710263MA	SCREW, 1/4-20 X 1.00
512	71067MA	WASHER, FLAT .281 X .63 X .065
513	15X143MA	NUT, 1/4-20
520	327072MA	AUGER, ASSEMBLY
520-2	302565MA	BLADE, AUGER
520-6	49838MA	RIVET
520-8	335992MA	BLADE, CENTER
520-10	307049E701MA	AUGER & BLADE SUPPORT
530	583459MA	BEARING & PLATE ASSEMBLY
531	334287MA	PLATE, RETAINER
532	579052MA	SCREW, 1/4-20 X .63
533	71067MA	WASHER, FLAT .281 X .63 X .065
534	15X143MA	NUT, 1/4-20
541	338965MA	PULLEY
542	17X100MA	WASHER

Footnotes

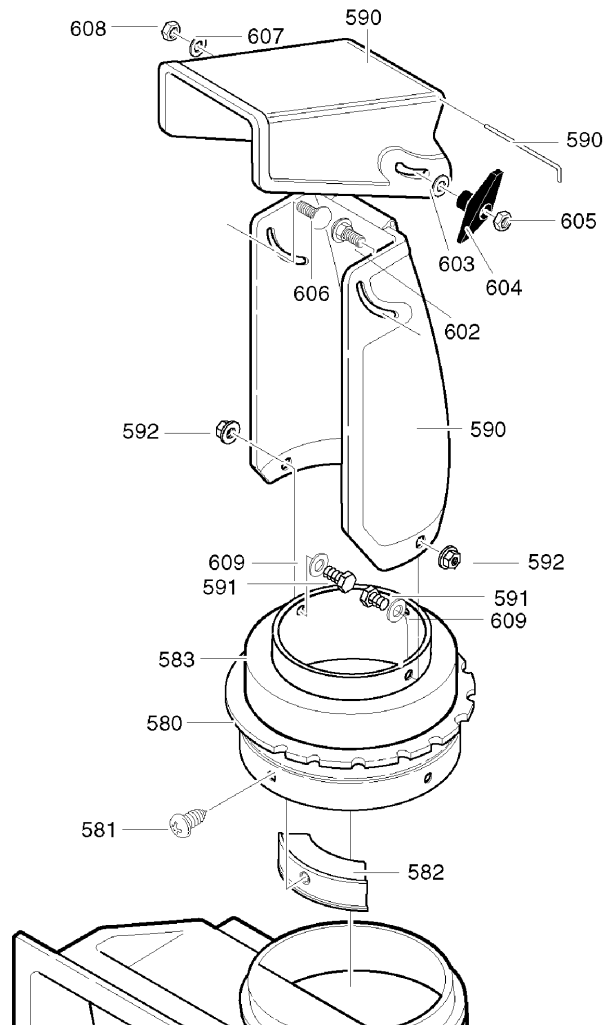
The above parts group applies to the following Mfg. Nos.:

621501x31NB 109-947, Single Stage Snow Thrower

Discharge Chute

0009

NOTE: Unless noted otherwise,
use the standard hardware torque
specification chart.



The above parts group applies to the following Mfg. Nos.:
621501x31NB 109-947, Single Stage Snow Thrower

Discharge Chute

REF NO	PART NO.	DESCRIPTION
580	333860MA	RING, CHUTE
581	711752MA	SCREW, #10 X .50
582	577021MA	GUIDE, CHUTE
583	762173MA	DONUT FOAM
590	762221MA	CHUTE ASSEMBLY
591	302628MA	SCREW 1/4-20 X .50
592	15X143MA	NUT, 1/4-20
602	302843MA	BOLT, 5/16-18 X 1.25 CARRIAGE
603	71071MA	WASHER, FLAT
604	57171MA	KNOB, T
605	71037MA	NUT, 5/16-18
606	578088MA	SCREW, 5/16-18 X .75
607	71071MA	WASHER, FLAT .349 X .69 X .066
608	71391MA	NUT, 5/16-18
609	71067MA	WASHER, FLAT

Footnotes

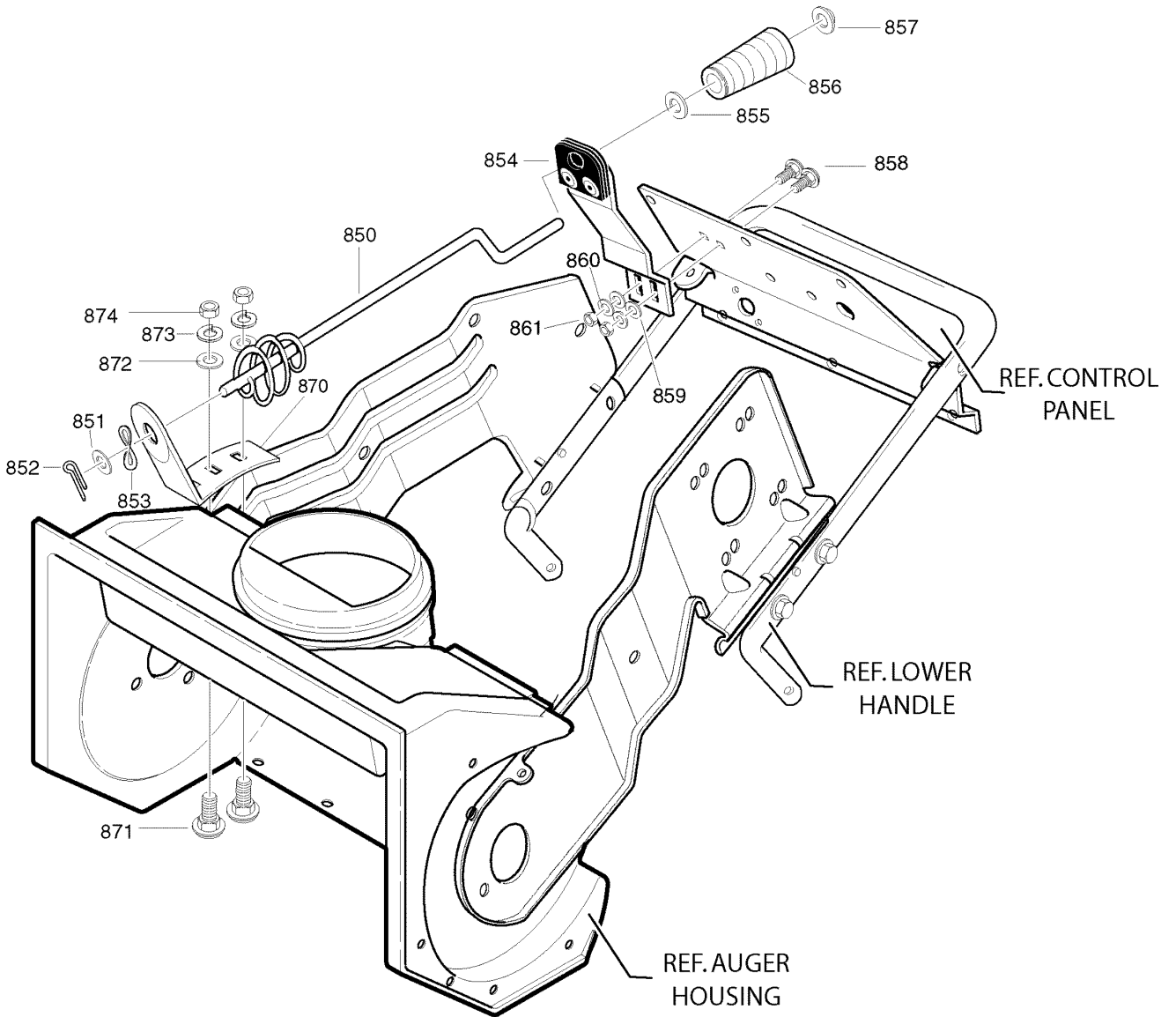
The above parts group applies to the following Mfg. Nos.:

621501x31NB 109-947, Single Stage Snow Thrower

Chute Rod Assembly

NOTE: Unless noted otherwise,
use the standard hardware torque
specification chart.

0011



The above parts group applies to the following Mfg. Nos.:
621501x31NB 109-947, Single Stage Snow Thrower

Chute Rod Assembly

REF NO	PART NO.	DESCRIPTION
850	337941MA	ROD, CHUTE
851	71072MA	WASHER, FLAT .406 X .81 X .066
852	71082MA	PIN, COTTER
853	313431MA	WASHER CURVED
854	340186MA	ASSY, CHUTE CRANK
855	71072MA	WASHER, FLAT .406 X .81 X .066
856	57082MA	KNOB, SLEEVE
857	331532MA	NUT, PUSH
858	340715MA	BOLT, 1/4-20 X .63 CARRIAGE
859	71071MA	WASHER, FLAT .344 X .69 X .065
860	71060MA	WASHER, .31 X .58 X .08
861	71034MA	NUT, 1/4-20 REGHEX
870	333946E701MA	BRKT, CHUTE ROTATE
871	340720MA	BOLT, 5/16-18 X .75 CARRIAGE
872	71071MA	WASHER, FLAT .349 X .69 X .066
873	71060MA	WASHER, SPLIT LOCK .31 X .58 X .08
874	71037MA	NUT, 5/16-18 HEXHEAD

Footnotes

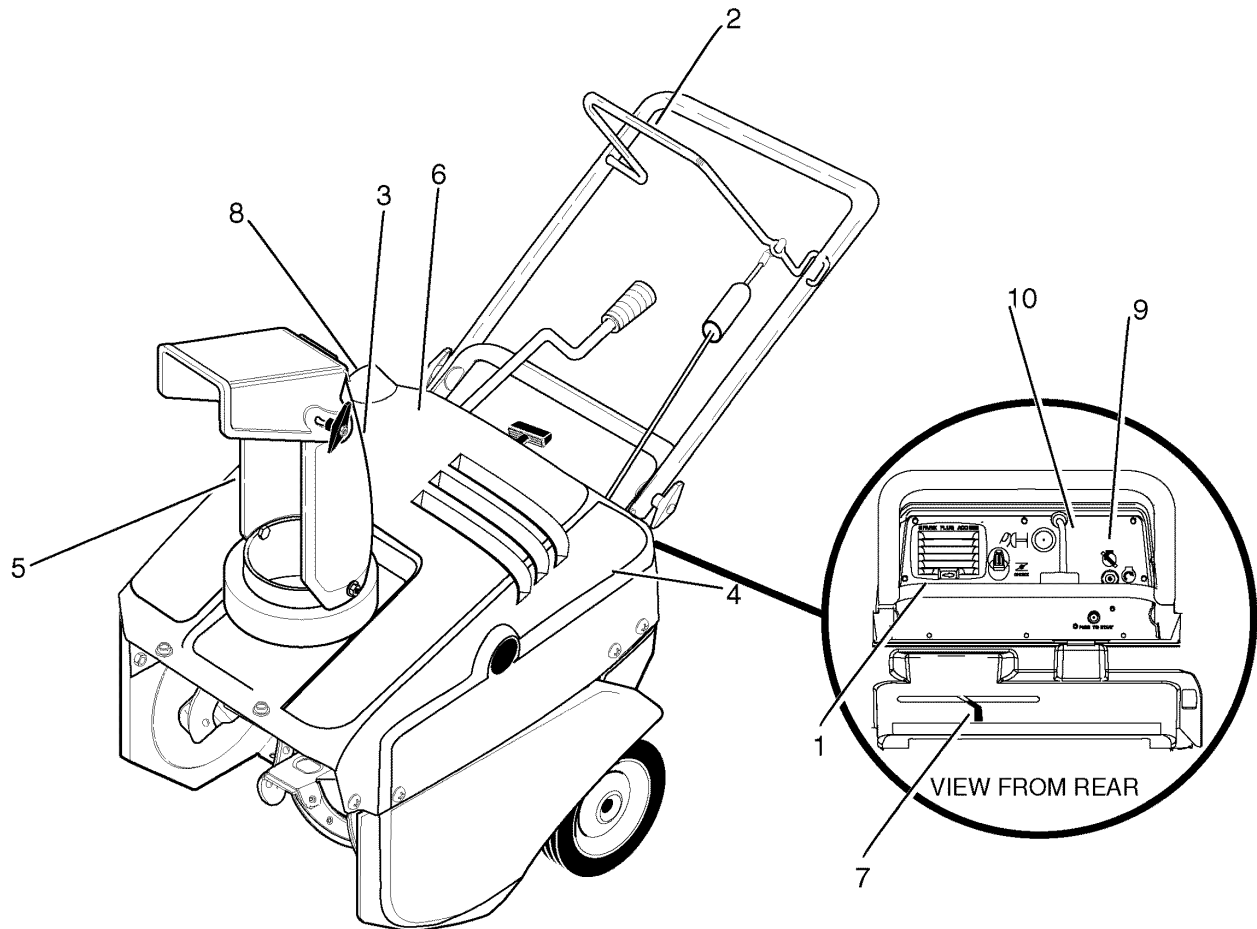
The above parts group applies to the following Mfg. Nos.:

621501x31NB 109-947, Single Stage Snow Thrower

Decals

0019

NOTE: Unless noted otherwise,
use the standard hardware torque
specification chart.



The above parts group applies to the following Mfg. Nos.:
621501x31NB 109-947, Single Stage Snow Thrower

Decals

REF NO	PART NO.	DESCRIPTION
1	761799MA	DECAL, SPARK PLUG ACCESS
2	337524MA	DECAL, AUGER CONTROL BAR
3	48X5643MA	DECAL, DANGER CHUTE
4	302778MA	DECAL, DANGER MUFFLER
5	48X5644MA	DECAL, DANGER AUGER
6	48X5953MA	DECAL, ODEC MURRAY 5.0/21
7	302774MA	DECAL, OFF-CHOKE-ON
8	48X5640MA	DECAL, EPA 5HP
9	761793MA	DECAL, ELECTRIC START COVER UP
10	48X269MA	DECAL, DASH 21"

Footnotes

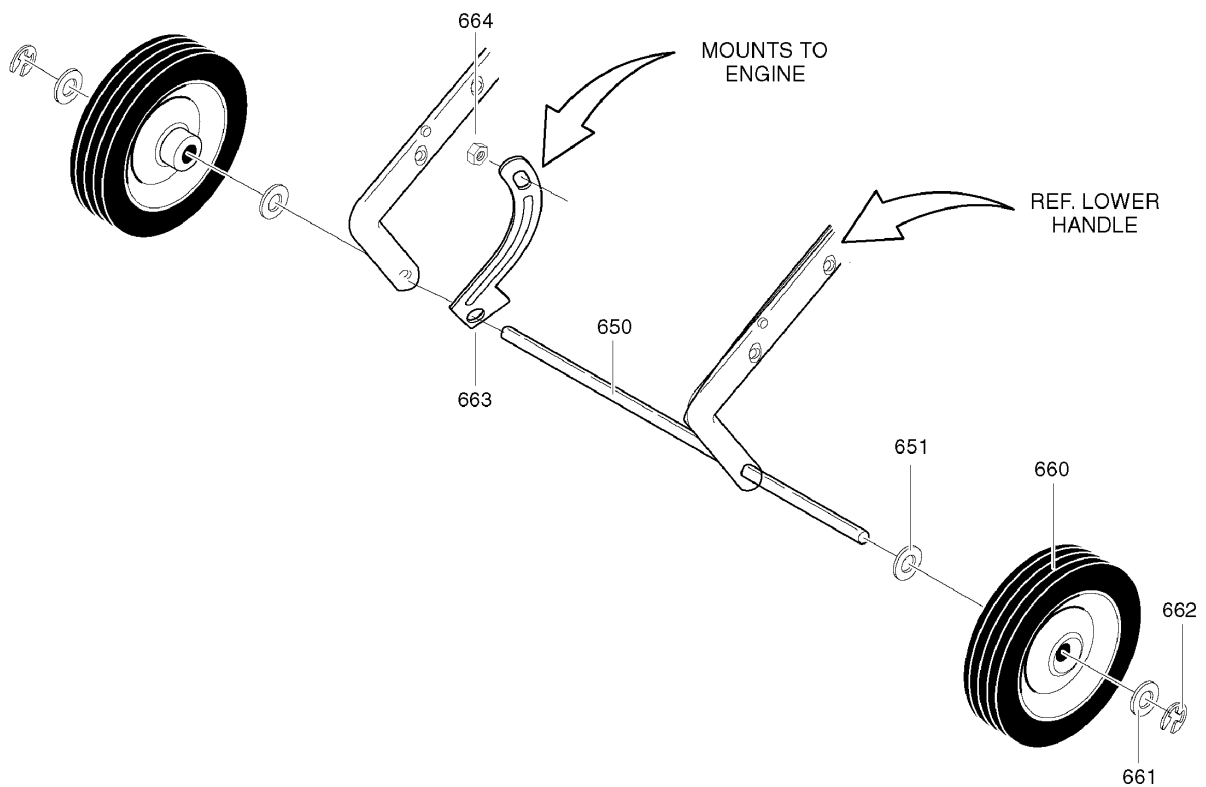
The above parts group applies to the following Mfg. Nos.:

621501x31NB 109-947, Single Stage Snow Thrower

Wheels

NOTE: Unless noted otherwise,
use the standard hardware torque
specification chart.

0017



The above parts group applies to the following Mfg. Nos.:
621501x31NB 109-947, Single Stage Snow Thrower

Wheels

REF NO	PART NO.	DESCRIPTION
650	313678MA	AXLE SHAFT
651	583409MA	WASHER, FLAT .391 X 1.00 X 1.25
660	1502190MA	TIRE & RIM
661	583409MA	WASHER, FLAT .391 X 1.00 X .125
662	577598MA	RING, RETAINER E
663	1502048MA	BRACKET, AXLE
664	71391MA	NUT

Footnotes

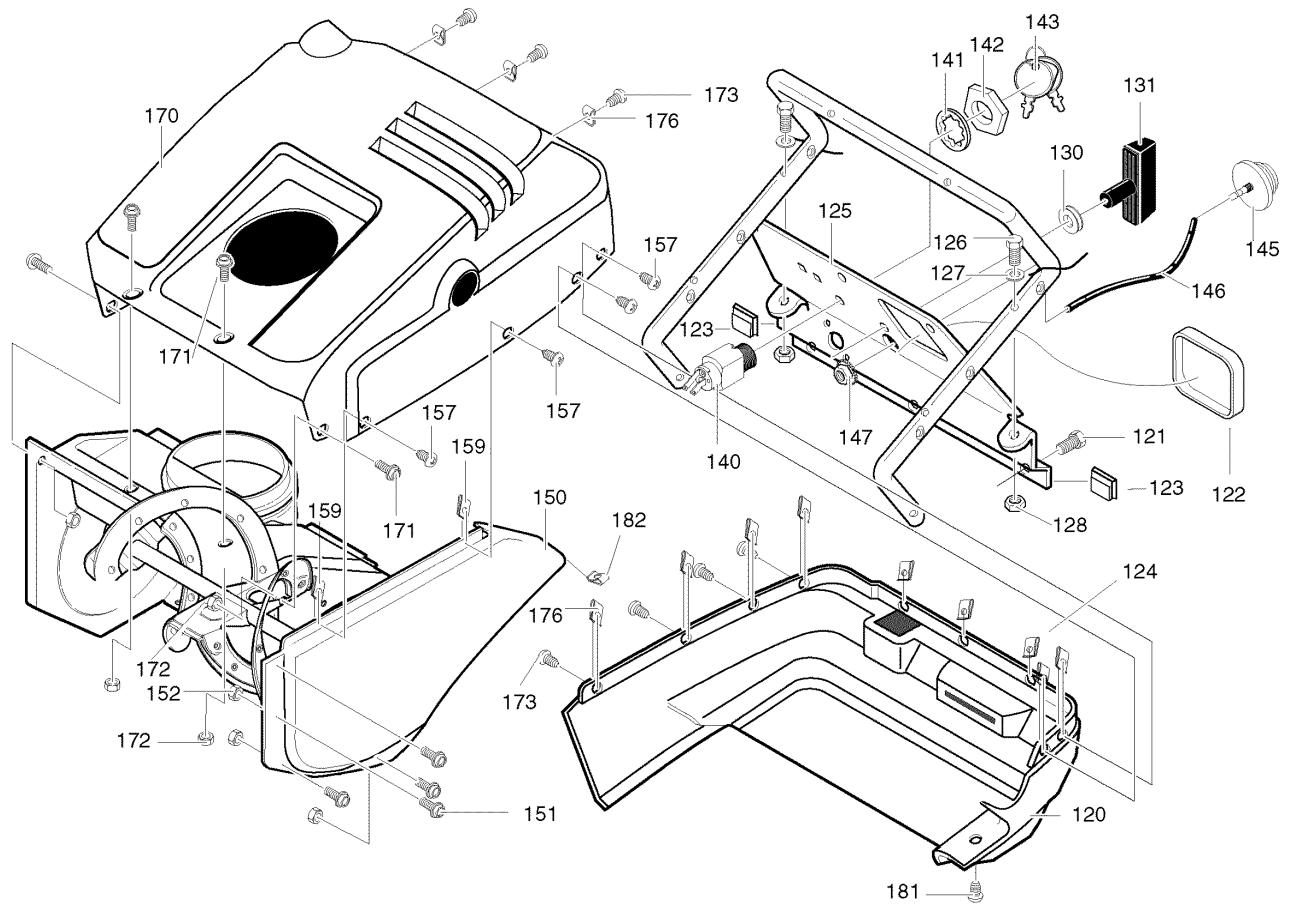
The above parts group applies to the following Mfg. Nos.:

621501x31NB 109-947, Single Stage Snow Thrower

Top Cover Assembly

0013

NOTE: Unless noted otherwise,
use the standard hardware torque
specification chart.



The above parts group applies to the following Mfg. Nos.:
621501x31NB 109-947, Single Stage Snow Thrower

Top Cover Assembly

REF NO	PART NO.	DESCRIPTION
120	340097MA	COVER, BOTTOM
121	313685MA	SCREW, 1/4-14 X .75
122	761538MA	PANEL, SPARK ACCESS
123	313057MA	CLIP, "S" TINNEMAN
124	578109MA	NUT, 1/4-10 SPEED J TYPE
125	761631E701MA	CONTROL PANEL
126	313674MA	SCREW, 1/4-20 X 1.25
127	71067MA	FLATWASHER, .281 X .63 X .065
128	73826MA	NUT, 1/4-20 HEX HEAD CENTER LOCK
130	57587MA	GOMMET & WASHER
131	333643MA	KNOB T
140	56992MA	SWITCH, IGNITION
141	313683MA	WASHER, INTERNAL TOOTH LOCK .640 X 1.1 X .05
142	300193MA	NUT. 5/8-32
143	49643MA	KEYS & RING
145	54601MA	PRIMERBULB
146	335507MA	HOSE PRIM 9.50LG
147	271172MA	NUT, 1/4-20 HEX HEAD KEPS
150	340089MA	COVER, BELT
151	12342MA	SCREW, 10-24 X .50
152	312300MA	NUT, #10-24 HEX HEAD CENTER LOCK
157	313685MA	SCREW, 1/4-14 X .75
159	578109MA	NUT, 1/4-10 SPEED J TYPE
170	1501218MA	COVER, TOP
171	12342MA	SCREW,#10-24 X .50
172	312300MA	NUT #10-24 HEX HEAD CENTER LOCK
173	313685MA	SCREW, 1/4-14 X .75
176	578109MA	NUT, 1/4-10 SPEED J TYPE
181	313685MA	SCREW, 1/4-14 X .75
182	578109MA	NUT 1/4-10 SPEED J TYPE

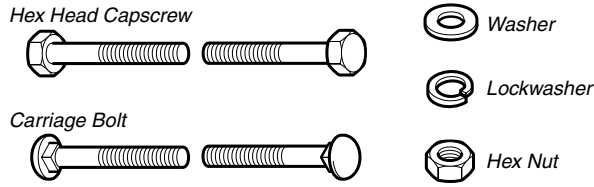
Footnotes

The above parts group applies to the following Mfg. Nos.:

621501x31NB 109-947, Single Stage Snow Thrower

Hardware Identification & Torque Specifications

Common Hardware Types

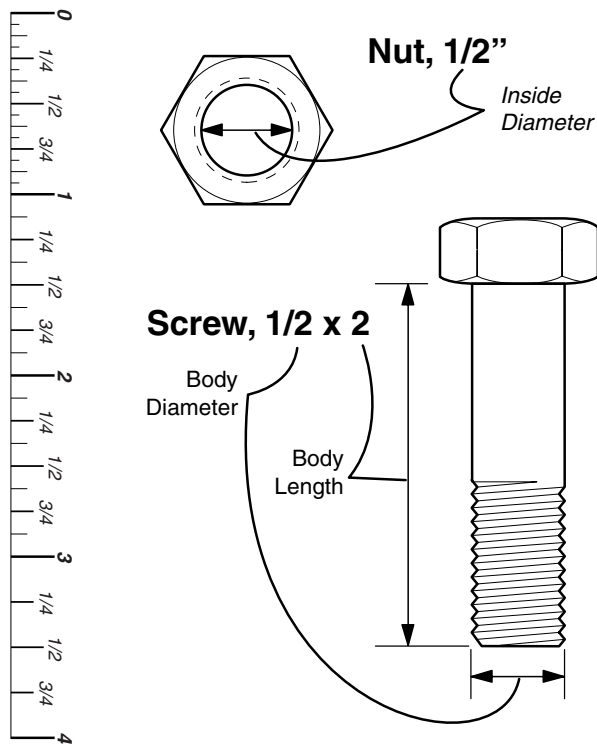


Standard Hardware Sizing

When a washer or nut is identified as 1/2", this is the *Nominal size*, meaning the *inside diameter* is 1/2 inch; if a second number is present it represents the *threads per inch*

When bolt or capscrew is identified as 1/2 - 16 x 2", this means the *Nominal size*, or *body diameter* is 1/2 inch; the second number represents the *threads per inch* (16 in this example, and the final number is the *body length* of the bolt or screw (in this example 2 inches long).

The guides and ruler furnished below are designed to help you select the appropriate hardware and tools.



Torque Specification Chart						
FOR STANDARD MACHINE HARDWARE (Tolerance ± 20%)						
Hardware Grade	No Marks SAE Grade 2		SAE Grade 5		SAE Grade 8	
	in/lbs ft/lbs	Nm.	in/lbs ft/lbs	Nm.	in/lbs ft/lbs	Nm.
8-32	19	2.1	30	3.4	41	4.6
8-36	20	2.3	31	3.5	43	4.9
10-24	27	3.1	43	4.9	60	6.8
10-32	31	3.5	49	5.5	68	7.7
1/4-20	66	7.6	8	10.9	12	16.3
1/4-28	76	8.6	10	13.6	14	19.0
5/16-18	11	15.0	17	23.1	25	34.0
5/16-24	12	16.3	19	25.8	27	34.0
3/8-16	20	27.2	30	40.8	45	61.2
3/8-24	23	31.3	35	47.6	50	68.0
7/16-14	30	40.8	50	68.0	70	95.2
7/16-20	35	47.6	55	74.8	80	108.8
1/2-13	50	68.0	75	102.0	110	149.6
1/2-20	55	74.8	90	122.4	120	163.2
9/16-12	65	88.4	110	149.6	150	204.0
9/16-18	75	102.0	120	163.2	170	231.2
5/8-11	90	122.4	150	204.0	220	299.2
5/8-18	100	136	180	244.8	240	326.4
3/4-10	160	217.6	260	353.6	386	525.0
3/4-16	180	244.8	300	408.0	420	571.2
7/8-9	140	190.4	400	544.0	600	816.0
7/8-14	155	210.8	440	598.4	660	897.6
1-8	220	299.2	580	788.8	900	1,244.0
1-12	240	326.4	640	870.4	1,000	1,360.0

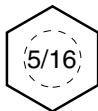
NOTES

- These torque values are to be used for all hardware excluding: locknuts, self-tapping screws, thread forming screws, sheet metal screws and socket head setscrews.
- Recommended seating torque values for locknuts:
 - for prevailing torque locknuts - use 65% of grade 5 torques.
 - for flange whizlock nuts and screws - use 135% of grade 5 torques.
- Unless otherwise noted on assembly drawings, all torque values must meet this specification.

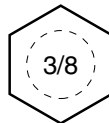
Wrench & Fastener Size Guide



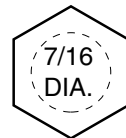
1/4" Bolt or Nut
Wrench—7/16"



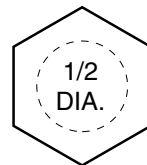
5/16" Bolt or Nut
Wrench—1/2"



3/8" Bolt or Nut
Wrench—9/16"



7/16" Bolt or Nut
Wrench (Bolt)—5/8"
Wrench (Nut)—11/16"



1/2" Bolt or Nut
Wrench—3/4"

