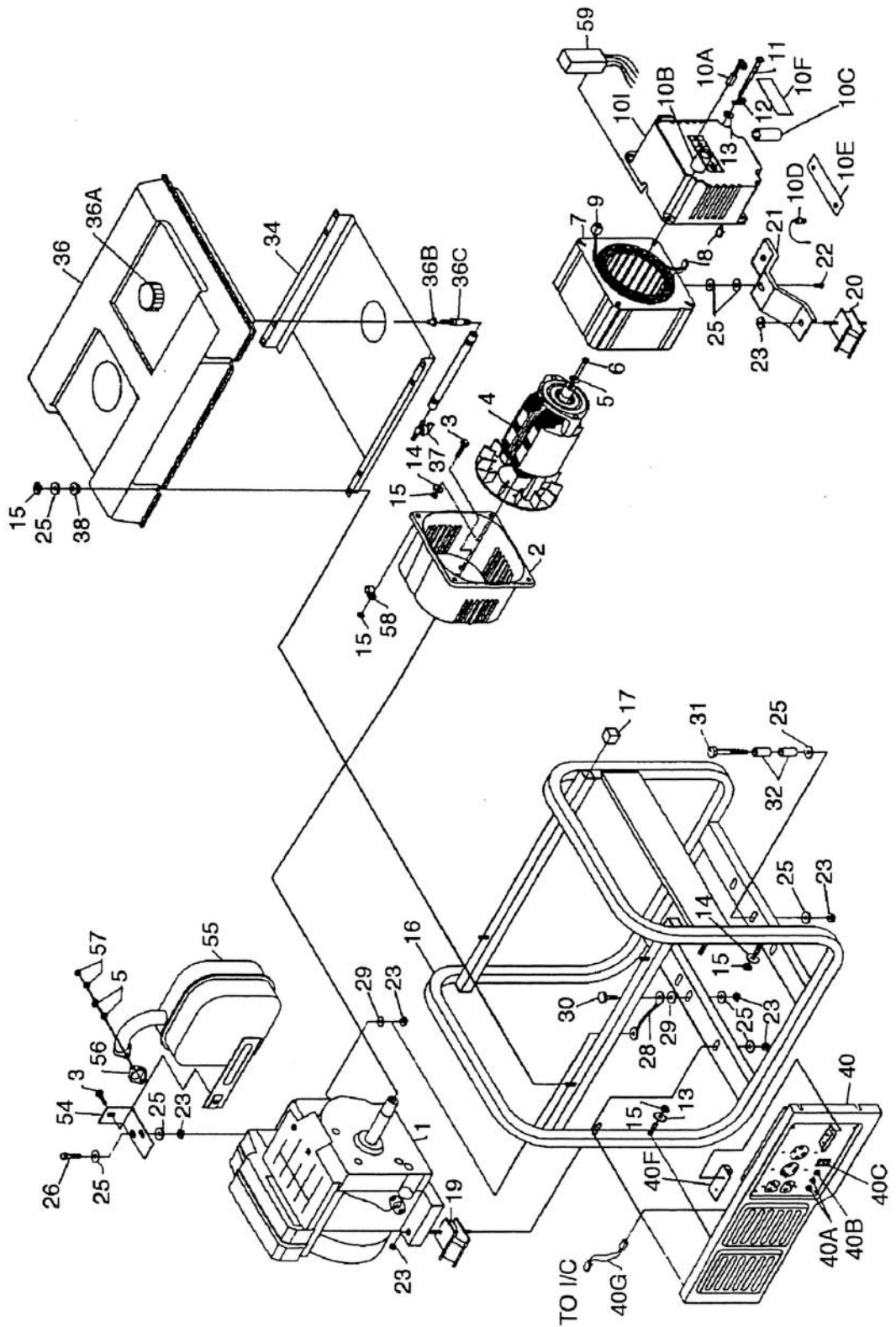


SERVICE PARTS LIST

MODEL  
GEN VANTAGE 4KW IC  
GEN VANTAGE 5KW IC

PART NUMBER  
PC0474603.01  
PC0475003



**SERVICE PARTS LIST**

**MODEL  
GEN VANTAGE 4KW IC  
GEN VANTAGE 5KW IC**

**PART NUMBER  
PC0474603.01  
PC0475003**

REF. NO.	PART NO.	DESCRIPTION	MODEL NUMBER	
			PC0474603.01	PC0475003
1	NOTE A	ENGINE, 9 HP VANGAURD	1	1
2	0050236.01	ADAPTER, ENGINE	1	1
4	0049620	ROTOR, 5KW RF5	1	1
7	0050517	STATOR, 5KW, 60HZ IC CSA	1	1
8	0049835	CONNECTOR, HSG. SET, ENDBELL	1	1
9	0049200	CONNECTOR, HSG. SET, PANEL	1	1
10	0050511.01	ENDBELL, WIRED COMPLETE, 47 SER CSA	1	1
10A	0050439	BRUSH, E-4R	2	2
10B	0035188	BEARING, NEEDLE FTT-1212	1	1
10C	0034819.01	CAPACITOR, 130MF	1	1
10D	0034843	DIODE	2	2
10E	0038976	HEAT SINK FOR DIODE	1	1
10F	0034844	COVER, BRUSH	1	1
10G	0051080	SHIELD, ENDBELL	1	1
10H	0051093	TOLERANCE RING	1	1
10I	0050397	RETAINING RING	1	1
12	0008854	LUG, GROUND	1	1
16	0051560	CARRIER, ASSY FULL	1	
16	0051756	CARRIER, ASSY FULL		1
19	0055524	KIT ISOL ENG VIB 45 DEG 1.75 STUD	2	2
20	0055525	KIT ISOL ENG VIB 45 DEG .63 STUD	2	2
21	0049693	BRACKET, STATOR	1	1
28	0049224	ASSY, GROUND WIRE BRAIDED	1	1
32	0047796	SPACER, 3/4"	2	2
34	0051537.01	SHIELD, HEAT	1	
34	0051821.01	SHIELD, HEAT		1
36	0051636.01	TANK ASSEMBLY COMPLETE	1	1
36A	0050322	CAP, FUEL	1	1
36B	0049113	BUSHING, FUEL	1	1
36C	0051367	FITTING, FUEL TANK	1	1
38	0048243	BUSHING, STEP	4	4
40	0050518.03	PANEL, WIRED COMPLETE 47-4 IC CSA	1	1
40A	0049071	CIRCUIT BREAKER, 20 AMP	2	
40A	0049072	CIRCUIT BREAKER, 25 AMP		2
40B	0049382	CIRCUIT BREAKER, 30 AMP	1	1
40C	0050298	SWITCH	1	1
40F	0050625.01	MODULE, IDLE CONTROL	1	1
40G	0006632	WIRE ASSY CONNECTOR	1	1
51	0050621	ELECTRO-MAGNET	1	1
55	0050952	MUFFLER, 9 HP	1	1
56	0051634	GASKET, MUFFLER	1	1
58	0048147	CLAMP, VINYL 1/2"	1	1
59	0052627	AUTOMATIC VOLTAGE REGULATOR (AVR)	1	1

**NOTE A:** COLEMAN POWERMATE WILL NOT PROVIDE ENGINES AS REPLACEMENT PARTS. ENGINES ARE COVERED THROUGH THE ENGINE MANUFACTURER'S WARRANTY.