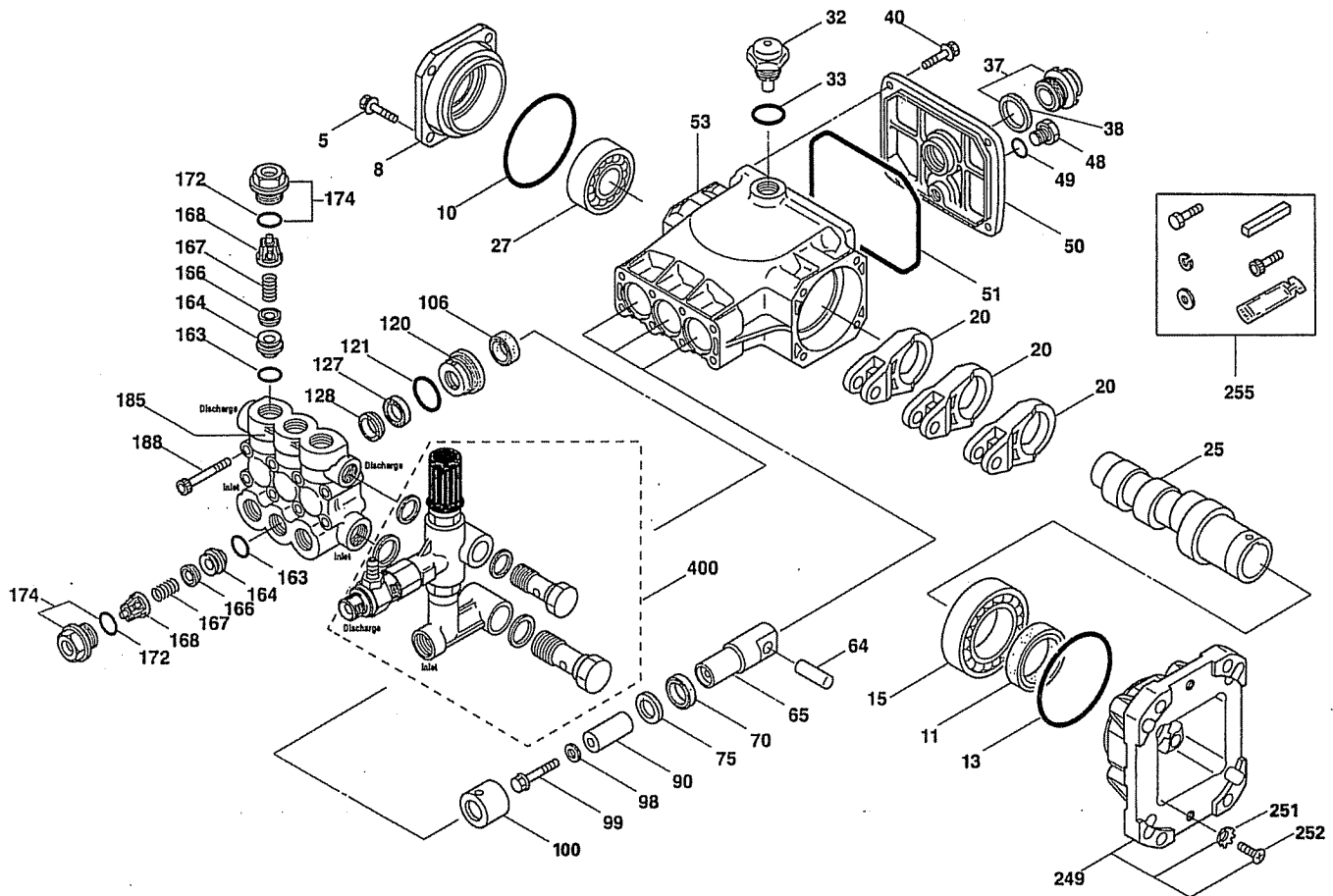


EXPLODED VIEW

May 2003

66DX PLUNGER PUMP

With Unloader/Injector



PARTS LIST

ITEM	P/N	MATL	DESCRIPTION	QTY	ITEM	P/N	MATL	DESCRIPTION	QTY
5	92519	STZP	Screw, Sems HHC (M6x16)	4	106	45188	NBR	Seal, LPS w/S-Spg	3
8	48259	AL	Cover, Bearing	1	120	48759	BB	Case, Seal	3
10	14028	NBR	O-Ring, Bearing Cover - 70D	1	121	13980	NBR	O-Ring, Seal Case - 70D	3
11	46419	NBR	Seal, Oil, Crankshaft - 70D	1	127	48758	SNG	V-Packing	3
13	14037	NBR	O-Ring, Bearing Cover - 70D	1	128	48757	NY	Adapter, Male	3
15	146421	STL	Bearing, Ball - Inner	1	163	17547	NBR	O-Ring, Seat - 85D	6
20	48843	TNM	Rod, Connecting	3	164	45790	S	Seat	6
25	48970	CM	Crankshaft (8.6 mm) 30G11	1	166	46429	S	Valve	6
	48977	CM	Crankshaft (10.0 mm) 35G11	1	167	43750	S	Spring	6
	48839	CM	Crankshaft (11.4 mm) 40G11	1	168	46583	NY	Retainer, Spring	6
27	14480	STL	Bearing, Ball - Outer	1	172	17616	NBR	O-Ring, Valve Plug - 80D	6
32	46798	—	Cap, Domed, Oil Filler	1	174	48760	BB	Plug, Valve w/O-Ring	6
33	14179	NBR	O-Ring, Filler Cap - 70D	1	185	48846	BB	Head, Manifold	1
37	92241	—	Gauge, Oil Bubble w/Gasket	1	188	87870	STZP	Screw, HSH (M8x65)	8
38	44428	NBR	Gasket, Flat, Oil Gauge - 80D	1	249	48841	AL	Flange Mount	1
40	92519	STZP	Screw, Sems HHC (M6x16)	4	251	46123	STZP	Lockwasher, Conical (M8)	4
48	25625	STCP	Plug, Drain (1/4"x19BSP)	1	252	46403	STZP	Screw, FH (M8x25)	4
49	23170	NBR	O-Ring, Drain Plug - 70D	1	255	30510	STZP	Assy, Bolt Mount	1
50	48862	AL	Cover, Crankcase	1	34100	STZP	Screw (3/8-16x1-3/8")	4	
51	14048	NBR	O-Ring, Crankcase Cover - 70D	1	30921	STZP	Lockwasher (3/8")	4	
53	48830	AL	Crankcase	1	30980	STZP	Washer, Flat (3/8")	4	
64	46404	CM	Pin, Crosshead	3	6106	—	Antiseize Lubricant	1	
65	48845	BB	Rod, Plunger	3	45217	STL	Key (1/4"x1/4"x2-1/2") HD	1	
70	48911	NBR	Seal, Oil, Crankcase	3	87788	STZP	Screw, Set (M5x8)	1	
75	48754	NBR	Slinger, Barrier - 70D	3	300	34262	NBR	Kit, Seal (Incls: 98,106,121,127,128)	1
90	48752	CC	Plunger (M14x47)	3	310	34260	NBR	Kit, Valve (Incls: 163,164,166,167,168,172)	2
98	46730	NBR	Washer Seal, Plunger Retainer - 90D	3	400	7660	BB	Unloader Assembly w/Fixed Injector	1
99	48201	SSL	Retainer, Plunger	3		7661	BB	Unloader Assembly w/o Fixed Injector	1
100	48755	NY	Retainer, Seal	3					

Italics are optional items. See Tech Bulletins 024, 060, 074 and 083 for additional information.

MATERIAL CODES (Not Part of Part Number): AL=Aluminum BB=Brass CC=Ceramic CM=Chrome-moly NBR=Medium Nitrile (Buna-N) NY=Nylon S=304SS SNG=Special Blend (Buna) SSL=316SS/Low Carbon STCP=Steel/Chrome Plated STL=Steel STZP=Steel/Zinc Plated TNM=Special High Strength