



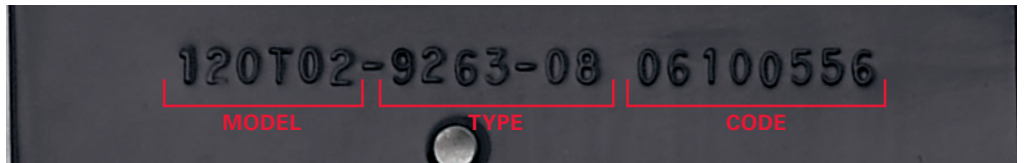
THE POWER WITHIN™



MODEL/TYPE/CODE

LOCATING YOUR BRIGGS & STRATTON ENGINE MODEL NUMBER

Knowing the model/type/code of your Briggs & Stratton engine will make it easy to order maintenance or repair parts either online or from your local dealer. Briggs & Stratton engines power Briggs & Stratton branded equipment as well as equipment produced by other manufacturers, so you might have both an equipment model number and an engine model number on your product. The engine model number is generally a number stamped into metal directly on your engine. Following is an example of what the engine model/type/code looks like:



LAWN & GARDEN ENGINE EXAMPLES:

○ Just above the spark plug



400 Series™, 500 Series™
Classic™, Sprint™, SO™, Q™

○ On the sheet metal above the muffler



600 Series™, 800 Series™
Quantum®, Intek™

 BRIGGSandSTRATTON.COM

 414.259.5333

LAWN & GARDEN ENGINE EXAMPLES:

○ Stamped into the valve cover



Power Built™ Series, I/C® Series™, Intek™ Series™, Extended Life Series®

UTILITY ENGINE EXAMPLES:

○ Stamped into the valve cover. Below the exhaust and behind the air cleaner.



800 - 1600 Series™

Power Built™, Intek™, Intek™ I/C®, Intek™ Pro



THE POWER WITHIN™

POST OFFICE BOX 702
MILWAUKEE, WI 53201 USA
414 259 5333
©2007 Briggs & Stratton Corporation