

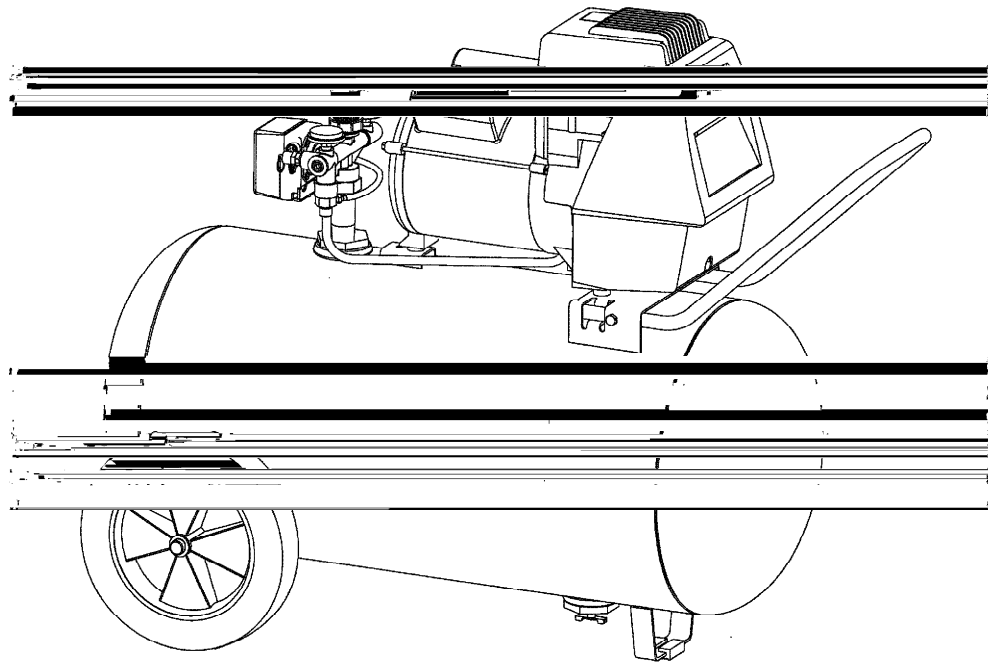
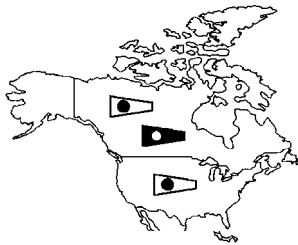
 **English** **Oilless, Single Stage, Direct Drive, Electric Air Compressors**  
 **French** **Sans l'huile, d'une seule étape, à prise directe, compresseur d'air électrique**  
 **Spanish** **Sin aceite, de una sola etapa, de mando directo, compresor de aire eléctrico**

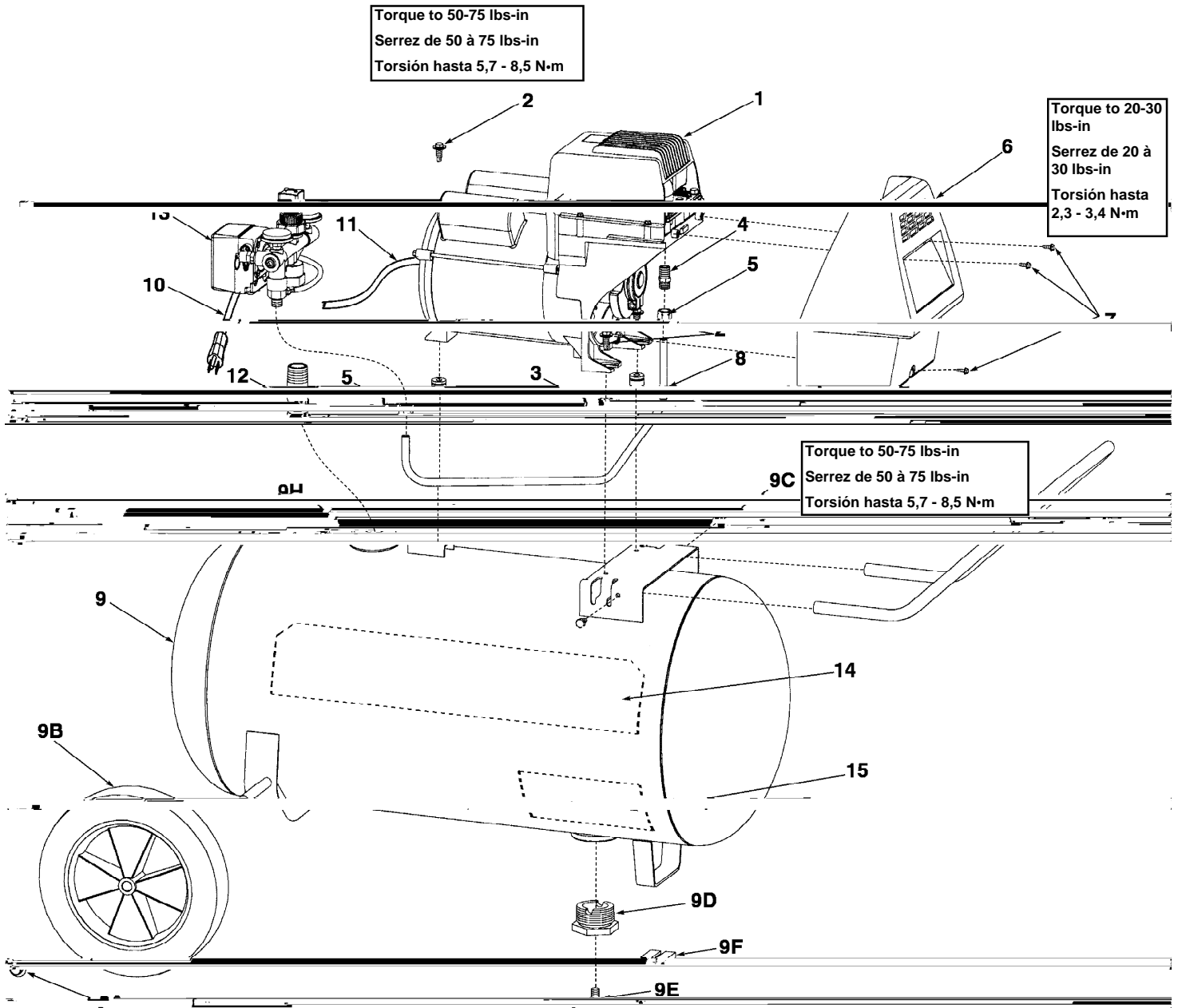


**Specification Chart**      **Tableau des spécifications**      **Cuadro de especificaciones**

| <b>MODEL NO.<br/>(MODÈLE)<br/>(MODELO)</b> | <b>PEAK<br/>H.P.<br/>(CV)</b> | <b>TANK CAPACITY<br/>GALLONS<br/>(CAPACITÉ DU<br/>RÉSERVOIR - LITRES)<br/>(CAPACIDAD DEL<br/>TANQUE - LITROS)</b> | <b>VOLTAGE/<br/>AMPS/PHASE<br/>(TENSION/<br/>AMPS/PHASE)<br/>(VOLTAJE<br/>AMP/FASE)</b> | <b>KICK-IN<br/>PRESSURE<br/>(PRESSION<br/>D'OUVERTURE)<br/>(PRESION DE<br/>CONEXION)</b> | <b>KICK-OUT<br/>PRESSURE<br/>(PRESSION DE<br/>FERM.)<br/>(PRESION DE<br/>DESCONEXION)</b> |
|--|-------------------------------|---|---|--|---|
| P0401110                                   | 4                             | 11 (42)   | 115/15/1  | 95<br>(6,6 bar)  | 125<br>(8,6 bar)  |
| P0501110                                   | 5                             | 11 (42)   |   |  |   |
| P0501510                                   | 5                             | 15 (57)   |   |  |   |
| P0502010                                   | 5                             | 20 (75)   |   |  |   |
| P0502510                                   | 5                             | 25 (95)   |   |  |   |
| P0602010                                   | 6                             | 20 (75)   |   |  |   |



Questions? See back page. \_\_\_\_\_ Questions ? Consultez la page final. \_\_\_\_\_ ¿Preguntas? Vea la página final.






**Note:** Tighten compression nut #5 handtight plus 1 full turn.  
**Note:** Serrez l'écrou #5 de compactage solide plus 1 plein tour.  
**Nota:** Apriete la tuerca #5 de la compresión handtight más 1 vuelta completa.

## PARTS LIST

## LISTE DE PIÈCES

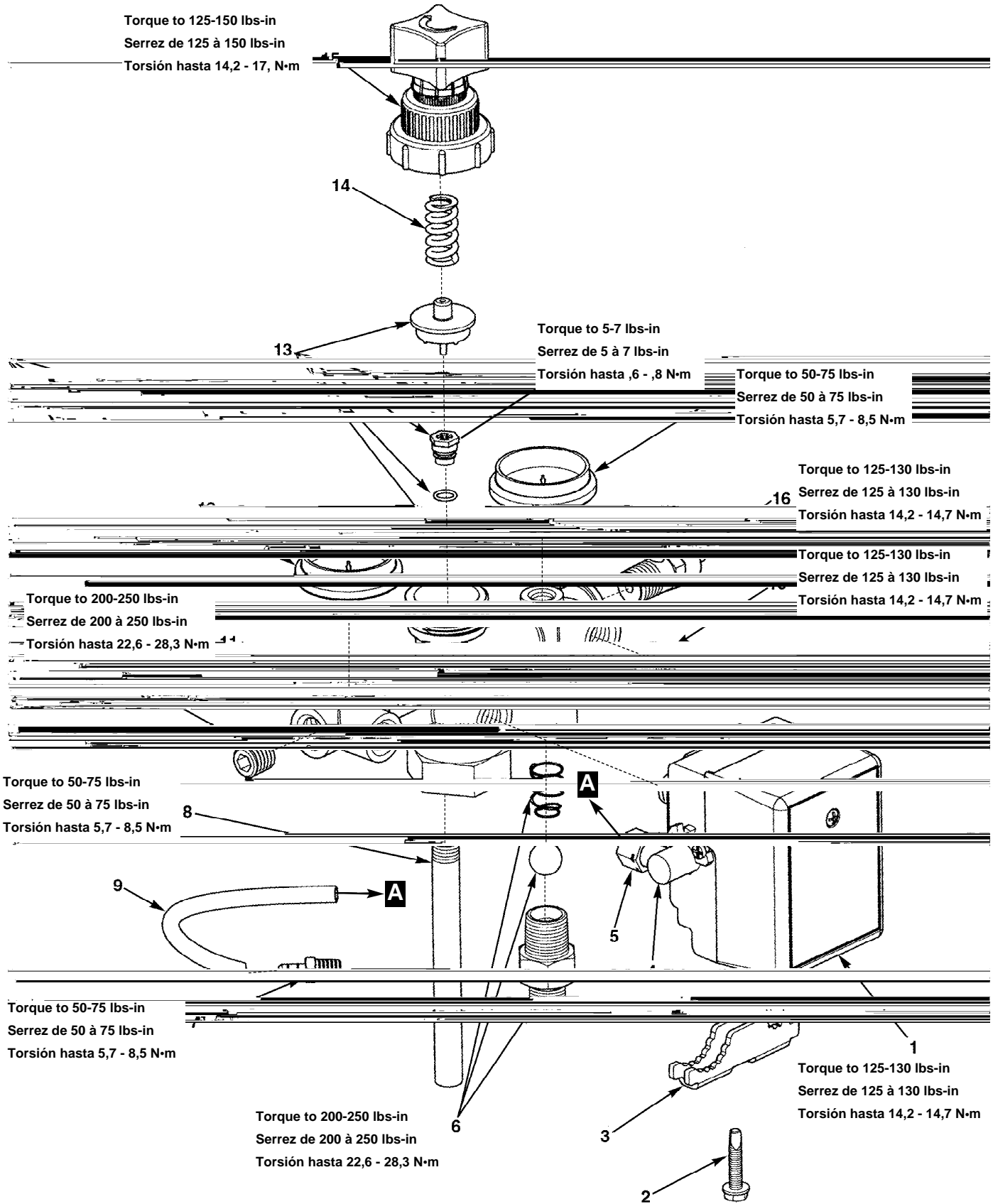
## LISTA DE LAS PIEZAS

| Item<br>Art<br>Art | Part No<br>N° / P<br>Núm / P | Qty<br>Qté<br>Cant |  English |  French |  Spanish |
|--------------------|------------------------------|--------------------|---|--|---|
|                    |                              |                    | Description   | Description  | Descripción   |
| 1                  | See pages<br>6 & 7           | 1                  | Pump/motor assy .....   | Ensemble pompe/moteur .....  | Conjunto de bomba/motor   |
| 2                  | 059-0221                     | 3                  | Bolt, shoulder, 1/4-28 .....  | Boulon .....   | Perno   |
| 3                  | 093-0019                     | 3                  | Grommet .....   | Oeillet .....  | Arandela de cabo  |
| 4                  | 068-0017                     | 1                  | Connector .....   | Connecteur .....   | Conector  |
|                    |                              |                    | 1/4 NPT x 3/8" O.D. tube  |  |   |
| 5                  | 058-0007                     | 2                  | Nut, 3/8" O.D. tube .....   | Écrou .....  | Tuerca  |
| 6                  | 142-0112                     | 1                  | Shroud .....  | Enveloppe .....  | Guardera  |
| 7                  | N/A                          | 3                  | Screw, #8-32 x 7/16" lg .....   | Vis .....  | Tornillo  |
| 8                  | 145-0326                     | 1                  | Tube, transfer .....  | Tube .....   | Tubo  |
| 9                  | 127-0044                     | 1                  | Tank assy, 11 gal .....   | Ensemble du réservoir, 42 litres .....   | Conjunto de tanque, 42 litros   |
|                    |                              |                    | includes 9a-9g .....  | Inclut 9a-9g .....   | Incluye 9a-9g   |
| or                 | 153-0049                     | 1                  | Tank assy, 15 gal .....   | Ensemble du réservoir, 57 litres .....   | Conjunto de tanque, 57 litros   |
|                    |                              |                    | includes 9a-9g .....  | Inclut 9a-9g .....   | Incluye 9a-9g   |
| or                 | 130-0051                     | 1                  | Tank assy, 20 gal, 5HP .....  | Ensemble du réservoir, 76 litres .....   | Conjunto de tanque, 76 litros   |
|                    |                              |                    | includes 9a-9g .....  | Inclut 9a-9g .....   | Incluye 9a-9g   |
| or                 | 130-0062                     | 1                  | Tank assy, 20 gal, 6HP .....  | Ensemble du réservoir, 76 litres .....   | Conjunto de tanque, 76 litros   |
|                    |                              |                    | includes 9a-9g .....  | Inclut 9a-9g .....   | Incluye 9a-9g   |
| or                 | 131-0028                     | 1                  | Tank assy, 25 gal .....   | Ensemble du réservoir, 95 litres .....   | Conjunto de tanque, 95 litros   |
|                    |                              |                    | includes 9a-9g .....  | Inclut 9a-9g .....   | Incluye 9a-9g   |
| 9a                 | 033-0002                     | 2                  | Hubcap .....  | Chapeau de moyeu .....   | Tapacubo  |
| 9b                 | 095-0010                     | 2                  | Wheel, 8" (11 gallon) .....   | Roue .....   | Rueda   |
| or                 | 095-0028                     | 2                  | Wheel, 10" (15, 20 & 25 gallon) .....   | Roue .....   | Rueda   |
| 9c                 | 059-0216                     | 2                  | Screw, 1/4-20 x .5" lg .....  | Vis .....  | Tornillo  |
|                    |                              |                    | w/serrated washer   |  |   |
| 9d                 | 063-0006                     | 2                  | Bushing, 3/4 NPT x 1/4 NPT .....  | Bague .....  | Buje  |
|                    |                              |                    | (11 gallon)   |  |   |
| or                 | 512-0035                     | 2                  | Bushing, 1-1/2 NPS x 1/4 NPT .....  | Bague .....  | Buje  |
|                    |                              |                    | (20 & 25 gallon)  |  |   |
|                    | 503-0002                     | 1                  | O-ring 1-1/2" .....   | Joint torique .....  | Anillo tórico   |
| 9e                 | 072-0001                     | 1                  | Petcock .....   | Robinet de décompression .....   | Llave de desagüe  |
| 9f                 | 094-0031                     | 1                  | Pad .....   | Tampon .....   | Almohadilla   |
| 9g                 | 112-0002                     | 1                  | Handle (11 & 20 gallon) .....   | Poignée .....  | Manija  |
| or                 | 112-0031                     | 1                  | Handle (15 & 25 gallon) .....   | Poignée .....  | Manija  |
| 9h                 | 512-0044                     | 1                  | Bushing, 1-1/2 NPSM x 3/4 NPT .....   | Bague .....  | Buje  |
|                    |                              |                    | (15, 20 & 25 gallon)  |  |   |
|                    | 513-0002                     | 1                  | O-ring 1-1/2" .....   | Joint torique .....  | Anillo tórico   |
| 10                 | 026-0030                     | 1                  | Cord, power .....   | Câble .....  | Cordón  |
| 11                 | 026-0233                     | 1                  | Cord, interconnect .....  | Câble .....  | Cordón  |
| 12                 | N/A                          | 1                  | Nipple 3/4" NPT x 3-1/2" .....  | Manchon fileté .....   | Niple   |
| 13                 | See pages<br>4 & 5           | 1                  | Manifold assembly .....   | Ensemble du collecteur .....   | Conjunto de múltiple  |
| 14                 | 098-2337                     | 1                  | Label, warning .....  | D'avertissement étiquette .....  | Amonestadora escritura de la etu  |
| 15                 | 098-1085                     | 1                  | Label, warning .....  | D'avertissement étiquette .....  | Amonestadora escritura de la etu  |




\*N/A - These are standard parts available at your local hardware store.

\*N/A - Ces pièces sont des pièces standard disponibles en quincaillerie.

\*N/A - Estas son piezas estándares disponibles en su ferretería local.



**Note:** Tighten compression nut #5 handtight plus 1 full turn.  
**Note:** Serrez l'écrou #5 de compactage solide plus 1 plein tour.  
**Nota:** Apriete la tuerca #5 de la compresión handtight más 1 vuelta completa.

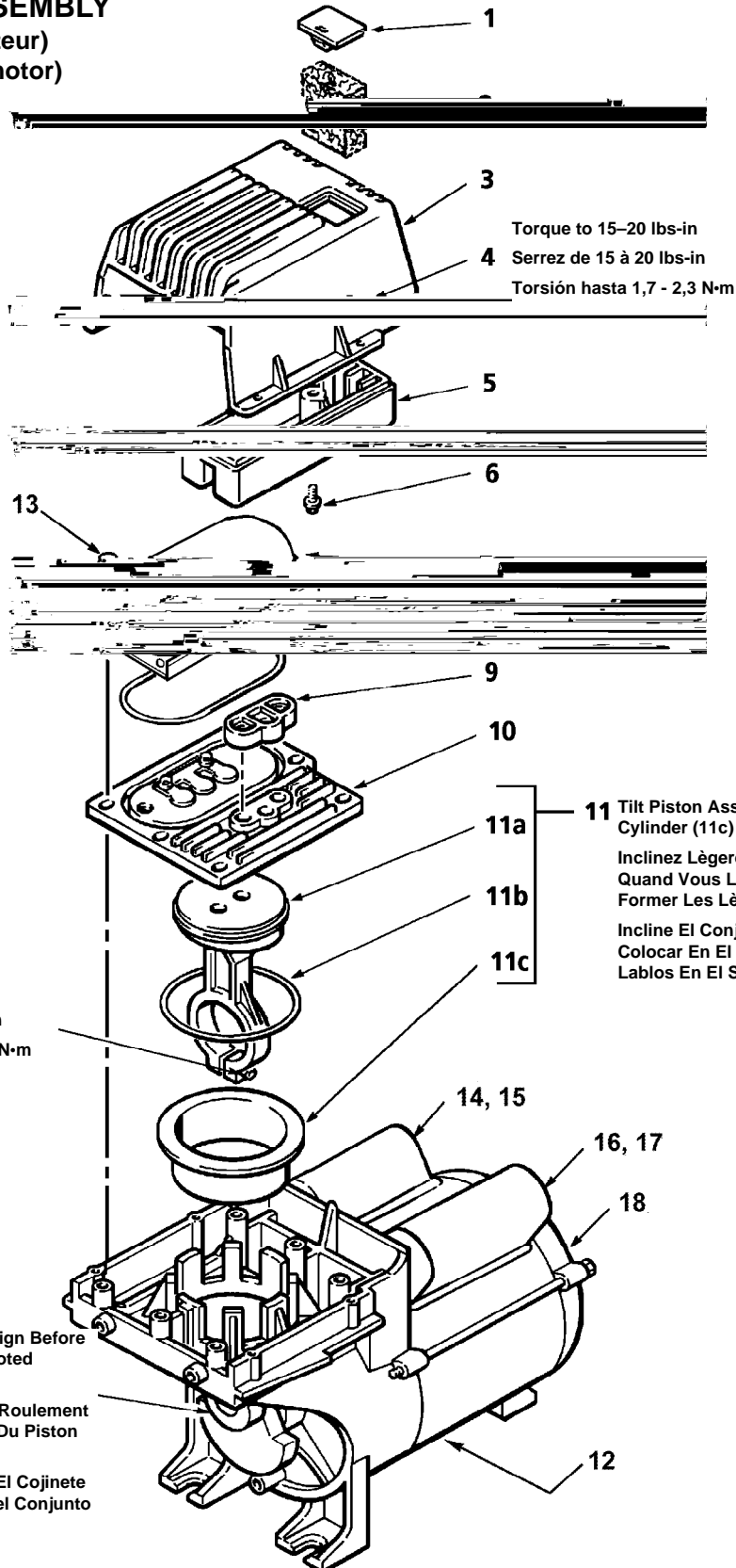
| Item<br>Art | Part No<br>N° / P | Qty<br>Qté  |  English |  French |  Spanish |
|-------------|-------------------|-------------|---|--|---|
| <u>Art</u>  | <u>Núm / P</u>    | <u>Cant</u> | <u>Description</u>  | <u>Description</u>   | <u>Descripción</u>  |
| 1           | 034-0135          | 1           | Switch, pressure .....<br><i>includes items 2 - 5</i>                                     | Interrupteur.....<br><i>inclut les élément 2 - 5</i>                                     | Manómetro<br><i>incluye los artículo 2 - 5</i>  |
| 2           | 061-0121          | 1           | Screw .....   | Vis .....  | Tornillo  |
| 3           | 071-0013          | 1           | Strain relief.....  | Soulagement de traction .....  | Aliviador de esfuerzo   |
| 4           | 136-0064          | 1           | Valve, bleeder.....<br><i>includes item 5</i>   | Soupape.....<br><i>inclut les élément 5</i>  | Válvula<br><i>incluye los artículo 5</i>  |
| 5           | 058-0017          | 1           | Nut, 1/4" O.D. tube.....  | Écrou.....   | Tuerca  |
| 6           | 139-0013          | 1           | Check valve assy.....   | Clapet de retenue.....   | Válvula de contraflujo  |
| 7           | 068-0061          | 1           | Connector, 1/16 NPT x 1/4" .....  | Connecteur.....  | Conector  |
| 8           | 065-0089          | 1           | Nipple, 1/8" x 4" .....   | Manchon fileté.....  | Niple   |
| 9           | 145-0324          | 1           | Tube, bleeder.....<br><i>Also purchase 058-0017 qty 1</i>                                 | Tube .....   | Tubo<br><i>también être acheté</i>  |
| 10          | 062-0035          | 2           | Plug.....   | Bouchon.....   | Tapón   |
| 11          | 041-0045          | 1           | Manifold.....   | Collecteur.....  | Múltiple  |
| 12          | 032-0056          | 2           | Gauge .....   | Manomètre .....  | Manómetro   |
| 13          | 105-0004          | 1           | Regulator repair kit .....  | Jeu de pièces de réparation .....  | Juego de reparación   |
| 14          | 055-0005          | 1           | Spring .....  | Ressort .....  | Resorte   |
| 15          | 137-0001          | 1           | Knob assy .....   | Ensemble du bouton.....  | Conjunto de perilla   |
| 16          | 136-0056          | 1           | Valve, ASME .....   | Soupape .....  | Válvula   |




**Pump specifications**  
Weight - 34 Lbs Approx.  
Max Rpm - 3500

**Spécifications de la pompe**  
Poids - 15,4 Kg  
Régime maximum - 3500 Tr/Min

**Especificaciones de la bomba**  
Peso - 15,4 Kg  
Rpm Max - 3500

**PUMP/MOTOR ASSEMBLY**  
(Ensemble pompe/moteur)  
(Conjunto de bomba/motor)



| Item<br>Art<br>Art | Part No<br>N° / P<br>Núm / P | Qty<br>Qté<br>Cant |  English |  French |  Spanish |
|--------------------|------------------------------|--------------------|---|--|---|
|                    |                              |                    | Description   | Description  | Descripción   |
| 1                  | 077-0118                     | 1                  | Cover .....   | Couvercle .....  | Tapa  |
| 2                  | 019-0152                     | 1                  | Filter.....   | Filtre .....   | Filtro  |
| 3                  | 042-0089                     |                    | Cover assy.....<br><i>includes items</i><br>1,2,3,5 & 6                                   | Ensemble du couvercle.....<br><i>includ les éléments</i><br>1,2,3,5 & 6                  | Conjunto de Tapa<br><i>incluye los artículos</i><br>1,2,3,5 & 6                             |
| 4                  | N/A                          | 6                  | Screw, #8 - 32 x .38" lg.....   | Vis .....  | Tornillo  |
| 5                  | N/A                          | 1                  | Manifold, intake.....<br>(order 042-0089)   | Collecteur .....   | Múltiple  |
| 6                  | N/A                          | 2                  | Screw, #8 - 32 x .75" lg.....   | Vis .....  | Tornillo  |
| 7                  | 117-0011                     | 1                  | Manifold, exhaust.....  | Collecteur .....   | Múltiple  |
| 8                  | 054-0157                     | 1                  | O-ring.....   | Joint torique.....   | Anillo tórico   |
| 9                  | 046-0231                     | 1                  | Seal, intake.....   | Joint.....   | Sello   |
| 10                 | 043-0151                     | 1                  | Valve plate assembly.....   | Ensemble de la .....<br>plaque de soupape  | Conjunto de placa<br>de válvula   |
| 11                 | 048-0074                     | 1                  | Piston & cylinder assy.....<br><i>includes items 11a-11c</i>                              | Ensemble du piston.....<br>et du cylindre<br><i>includ les éléments 11a-11c</i>          | Conjunto de<br>cilindro y pistón<br><i>incluye los artículos 11a-11c</i>                    |
| 11a                | NA                           | 1                  | Piston assy .....   | Ensemble du piston.....  | Conjunto de pistón  |
| 11b                | 054-0158                     | 1                  | O-ring.....   | Joint torique.....   | Anillo tórico   |
| 11c                | NA                           | 1                  | Cylinder.....   | Cylindre.....  | Cilindro  |
| 12                 | 040-0307                     | 1                  | Motor assy 4-5HP .....  | Ensemble du moteur 4-5HP .....   | Conjunto de motor 4-5HP   |
| or                 | 040-0323                     | 1                  | Motor assy 6HP.....<br>must be purchased as<br>complete pump/motor assy                   | Ensemble du moteur 6HP.....<br>vendu en une seule<br>ensemble pompe/moteur               | Conjunto de motor 6HP<br>un conjunto completo<br>de bomba/motor<br>se debe comprar como     |
| 13                 | 061-0062                     | 6                  | Screw, 1/4 - 20 x 1.25" lg.....   | Vis .....  | Tornillo  |
| 14                 | 166-0105                     | 1                  | Capacitor, start, black.....  | Condensateur.....  | Condensador   |
| 15                 | 166-0103                     | 1                  | Cover .....   | Couvercle .....  | Tapa  |
| 16                 | 166-0104                     | 1                  | Capacitor, run, silver.....   | Condensateur.....  | Condensador   |
| 17                 | 166-0106                     | 1                  | Cover .....   | Couvercle .....  | Tapa  |
| 18                 | 077-0137                     | 1                  | Cover, terminal .....   | Couvercle .....  | Tapa  |

## Service Kits Available

## Jeux De Pièces D'entretien Disponibles

## Juegos De Servicio Disponibles

|          |  |  |   |
|----------|--|--|---|
| 046-0234 | Seal kit.....<br><i>includes items</i><br>8, 9 & 11b | Jeu de joints.....<br><i>includ les éléments</i><br>8, 9 & 11b | Juego de sellos<br><i>incluye los artículos</i><br>8, 9 & 11b |
|----------|--|--|---|

\*N/A - These are standard parts available at your local hardware store.

\*N/A - Ces pièces sont des pièces standard disponibles en quincaillerie.

\*N/A - Estas son piezas estándares disponibles en su ferretería local.