

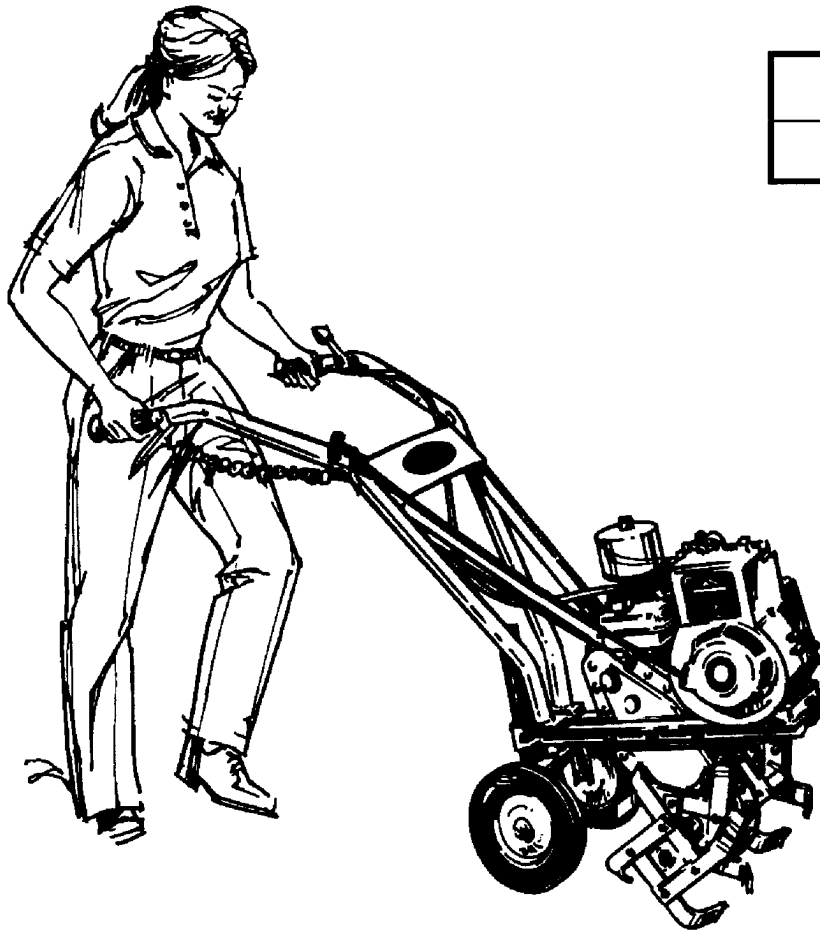
Parts Manual for

SNAPPER[®]

FRONT TINE TILLER
SERIES 0

MODEL

SMT3.5

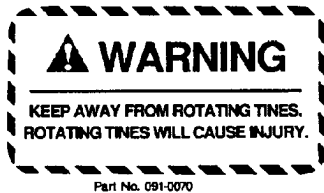
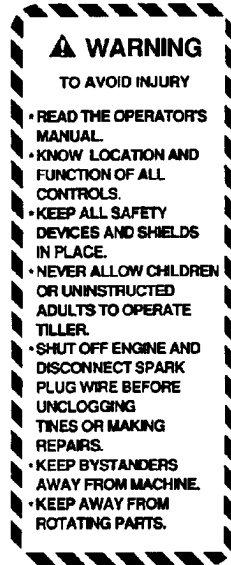


PARTS FOR THIS MACHINE MUST BE ORDERED FROM:
1189 Old Schuylkill Road * P.O. Box 111 * Parker Ford, PA 19457-0111
Phone: (610) 495-7181 or (800) 348-1117, Fax: (610) 495-5951

SNAPPER McDonough, GA., 30253 U.S.A.

TRANSMISSION ASSEMBLY (PART NUMBER 708-3260)

ITEM NO.	PART NO.	DESCRIPTION	QTY.
1	708-3248	R.H. Case Half Assembly (includes 1A-1E)	1
1A	020-0014	Soft Plug	1
1B	708-3231	Tine Shaft Bearing	1
1D	708-3241	Tine Shaft Seal	2
1E	708-3244	Bronze Bearing	1
2	708-3247	L.H. Case Half Assembly (includes 2A-2E)	1
2A	706-0342	Drive Shaft Seal	1
2B	708-3231	Tine Shaft Bearing	1
2D	708-3241	Tine Shaft Seal	2
2E	708-3244	Bronze Bearing	1
3	708-3246	Drive Assembly Shaft	1
4	706-0348	Roller Chain #35-50 Pitches	1
5	020-0011	Oil Plug	1
6	706-1763	Roller Chain #40-40 Pitches	1
7	706-3052	1/4-20 x 1/2" Whiz Lockscrew	16
8	090-0453	1/4-20 Whiz Locknut	16
9	708-3236	Tine Shaft Assembly	1
10	708-3238	Gasket	1
11	708-3240	Inner Race	1
12	708-3242	Idler Sprocket Assembly (includes 12A)	1
12A	708-3237	Idler Sprocket Bearing	2
13	706-2788	1/4 x 3/4" Self Tapping Screw	1
14	090-0073	5/16-18 x 2-1/4" HHCS	1
15	090-0460	5/16-18 Nylok Locknut	1
16	708-3232	Tine Shaft Spacer	1



OPERATING INSTRUCTIONS

STARTING:

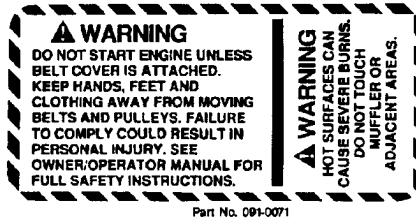
1. Adjust or remove wheel assembly.
2. Adjust drag bar for desired depth.
3. Stand between handlebars.
4. Allow clutch lever to drop into disengaged position.
5. Move throttle lever to choke position.
6. Hold left handlebar with left hand.
7. Pull starter rope with right hand.
8. As engine starts move throttle lever from choke to desired speed position.

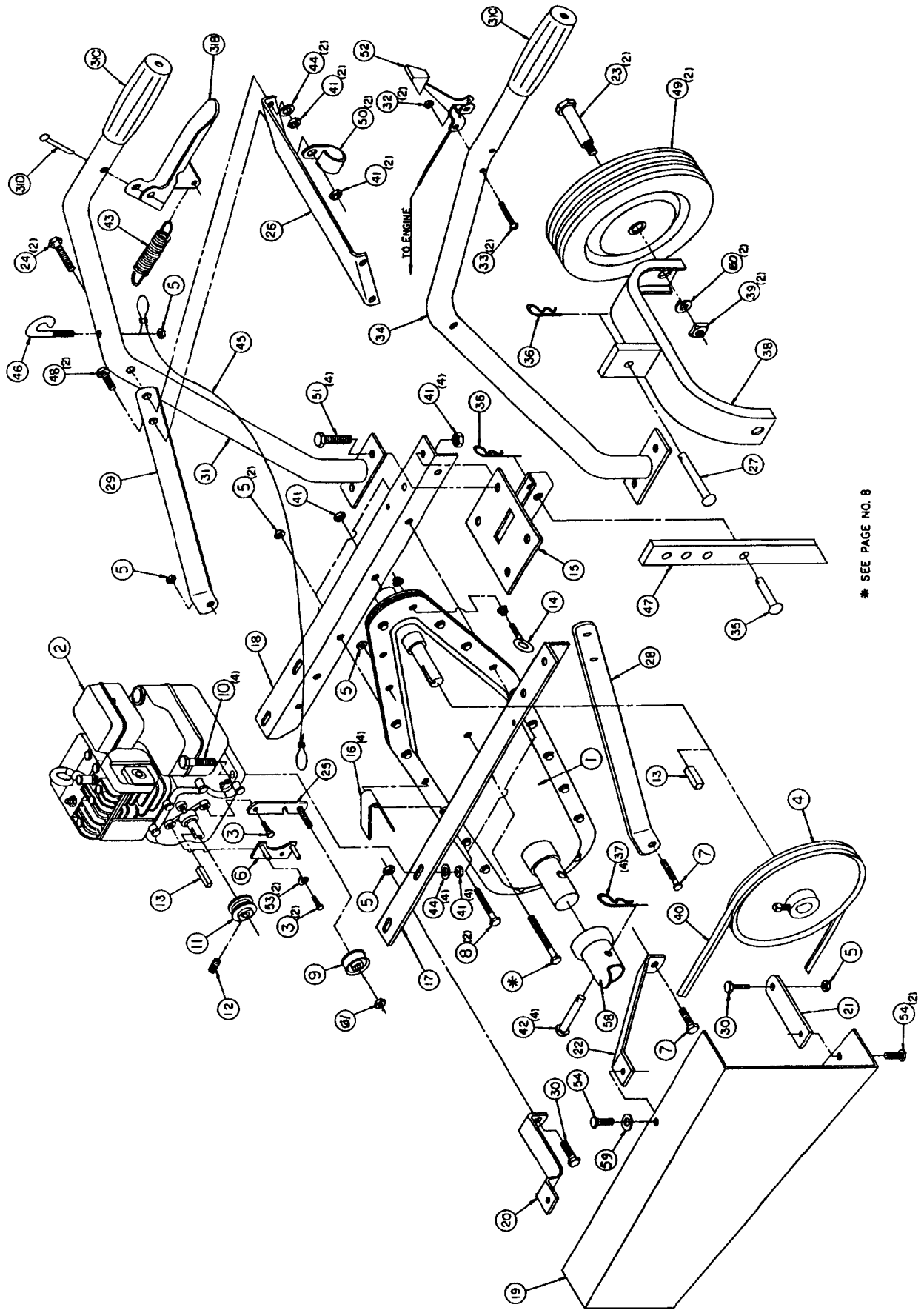
STOPPING: Move throttle lever to stop position.

TILLING: Squeeze clutch lever to start tilling.

Release lever to stop tilling.

Part No. 091-0067





* SEE PAGE NO. 8

ITEM NO.	PART NO.	DESCRIPTION	QTY.
1	708-3260	Transmission Assembly	1
3	090-0408	5/16-24 x 3/4" HHCS	3
4	708-3293	Pulley—Transmission	1
5	090-0470	1/4-20 Nylok Locknut	8
6	708-3290	Belt Release Bracket	1
7	090-0060	1/4-20 x 1" HHCS	2
8	090-0405	1/4-20 x 2-1/4" HHCS	2
9	030-0111	Idler Pulley	1
10	090-0090	5/16-18 x 1-1/2" HHCS	4
11	706-1368	Pulley—Engine	1
12	080-0053	5/16-18 x 5/16" Set Screw	1
13	100-0018	3/16" x 3/16" x 1" Shaft Key	2
14	090-0411	1/4-20 x 2-1/2" Eye Bolt	1
15	708-3361	Hitch	1
16	708-3267	"U" Shaped Spacer	4
17	708-3402	L.H. Engine Mount	1
18	708-3403	R.H. Engine Mount	1
19	708-3400-BK	Belt Cover	1
20	708-3302	Bracket—Lower Front	1
21	708-3308	Bracket—Lower Rear	1
22	708-3315	Bracket—Upper	1
23	708-1871	3/8-16 Shoulder Bolt	2
24	090-0091	5/16-18 x 1-3/4" HHCS	2
25	708-2978	Idler Arm	1
26	706-3406-RD	Cross Brace	1
27	706-1024	3/8" x 2-1/4" Clevis Pin	1
28	708-3162	L.H. Tie Bar	1
29	708-3163	R.H. Tie Bar	1
30	090-0012	1/4-20 x 3/4" HHCS	3
31	706-2637	R.H. Handle Assembly (includes 31B, 31C, and 31D)	1
31B	706-3254	Clutch Control Lever	1
31C	706-0630	Handle Grip	1
31D	706-2791	1/4 x 1-3/8" Rivet	1
32	706-1539	10-32 Kep Nut	2
33	090-0161	10-32 x 1-1/2" RD HD Machine Screw	2
34	706-2632	L.H. Handle Assembly (includes 31C)	1
35	708-3251	3/8" x 1-1/2" Clevis Pin	1
36	706-0924	1/8" Hair Pin	2
37	100-0015	3/32" Hair Pin	4
38	708-3173	Wheel Frame	1
39	090-0285	3/8-16 Square Nut	2
40	030-0001	V-Belt	1
41	090-0460	5/16-18 Nylok Locknut	12
42	708-3211	5/16" x 1-19/32" Clevis Pin	4
43	706-0152	Clutch Control Spring	1
44	090-0233	5/16" Flat Washer	4
45	706-2250	Clutch Cable Assembly	1
46	090-0467	Pull Cord Holder	1
47	708-3252	Rear Skid	1
48	090-0066	5/16-18 x 3/4" HHCS	2
49	708-3255	Wheel	2
50	706-2243	Cable Guide	2
51	090-0088	5/16-18 x 1" HHCS	4
52	706-2666	Throttle Control w/Cable	1
53	090-0394	5/16" Med. Split Lock Washer	2
54	090-0052	1/4-20 x 1/2" HHCS	2
55	708-3156	R.H. Outside Tine	1
56	708-3155	L.H. Outside Tine	1
57	708-3154	R.H. Inside Tine	1
58	708-3153	L.H. Inside Tine	1
59	090-0378	1/4" Med. Split Lockwasher	1
60	090-0228	3/8" Med. Split Lockwasher	2
61	090-0042	3/8"-16 Gripco Locknut	1

Parts Manual for

SNAPPER®

**SMT3.5 FRONT TINE TILLER
SERIES 0**

COPYRIGHT © 1999
SNAPPER INC.
ALL RIGHTS RESERVED

SNAPPER® McDonough, GA., 30253 U.S.A.