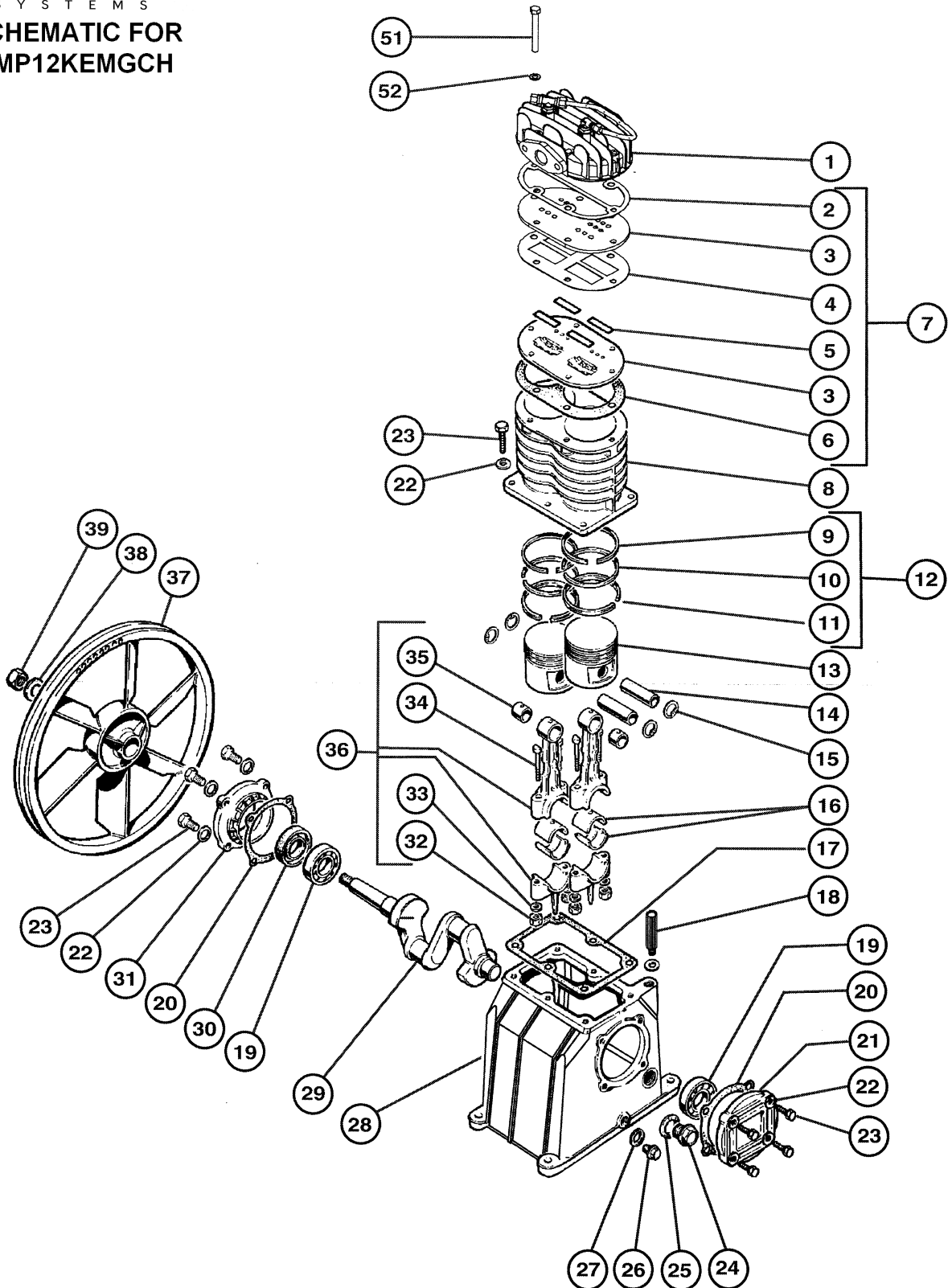
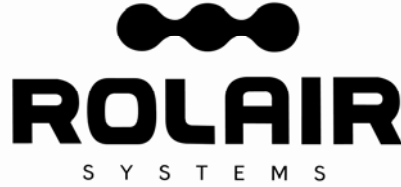

ROLAIR
 SYSTEMS
 SCHEMATIC FOR
 PMP12KEMGCH





ROLAIR SYSTEMS

606 S. Lake Street, P.O. Box 346
 Hustisford Wisconsin 53034-0346
 Phone: 920-349-3281
 Sales Fax: 920.349.3691
 Service Fax: 920.349.8861
www.rolair.com

PARTS LIST FOR PMP12KEMGCH

Schematic #	Description	Part #	Qty.
1	Head	31301170CH	1
2	Gasket	30501090CH	1
3	Valve Plate	32701030CH	2
4	Gasket	30501100CH	1
5	Valve	32700350CH	4
6	Gasket	30501110CH	1
7	Valve Plate Assembly	1700VK17	1
8	Cylinder	31601010CH	1
9	Ring	31200300CH	2
10	Ring	31200290CH	2
11	Ring	31200280CH	2
12	Ring Set	K17RINGS	1
13	Piston	31200270CH	2
14	Piston Pin	31200260CH	2
15	Snap Ring	37600230CH	4
16	Bearing Shell	31100210CH	2
17	Gasket	30501120CH	1
18	3/8" Breather/Oil Fill Plug	36507050CH	1
19	Bearing	30300030CH	2
20	Gasket	30500150CH	2
21	Bearing Carrier	30400830CH	1
22	Washer	37508130CH	14
23	Bolt	37301140CH	14
24	Sight Gauge	36500140CH	1
25	Gasket	30500130CH	1
26	Drain Bolt	36500110CH	1
27	Gasket	30500160CH	1
28	Crankcase	33101000CH	1
29	Crankshaft	30201000CH	1
30	Oil Seal	30300040CH	1
31	Bearing Carrier	30400890CH	1
32	Nut	37400220CH	4
33	Washer	37500310CH	4
34	Bolt	37300250CH	4
35	Bushing*	31100240CH	2
36	Connecting Rod w/Upper Bushing	31100750CH	2
	Connecting Rod Assembly	31100750CH1	2
37	Flywheel	31000080CH	1
38	Washer	37500730CH	1
39	Nut	37400720CH	1
51	Bolt	37300990CH	6
52	Washer	37500400CH	6
	Gasket Set	K17GASKETS	1
	Optional Stud Bolt	32500020CH	1

*Bushing is not machined to fit piston pin if ordered separate from connecting rod.