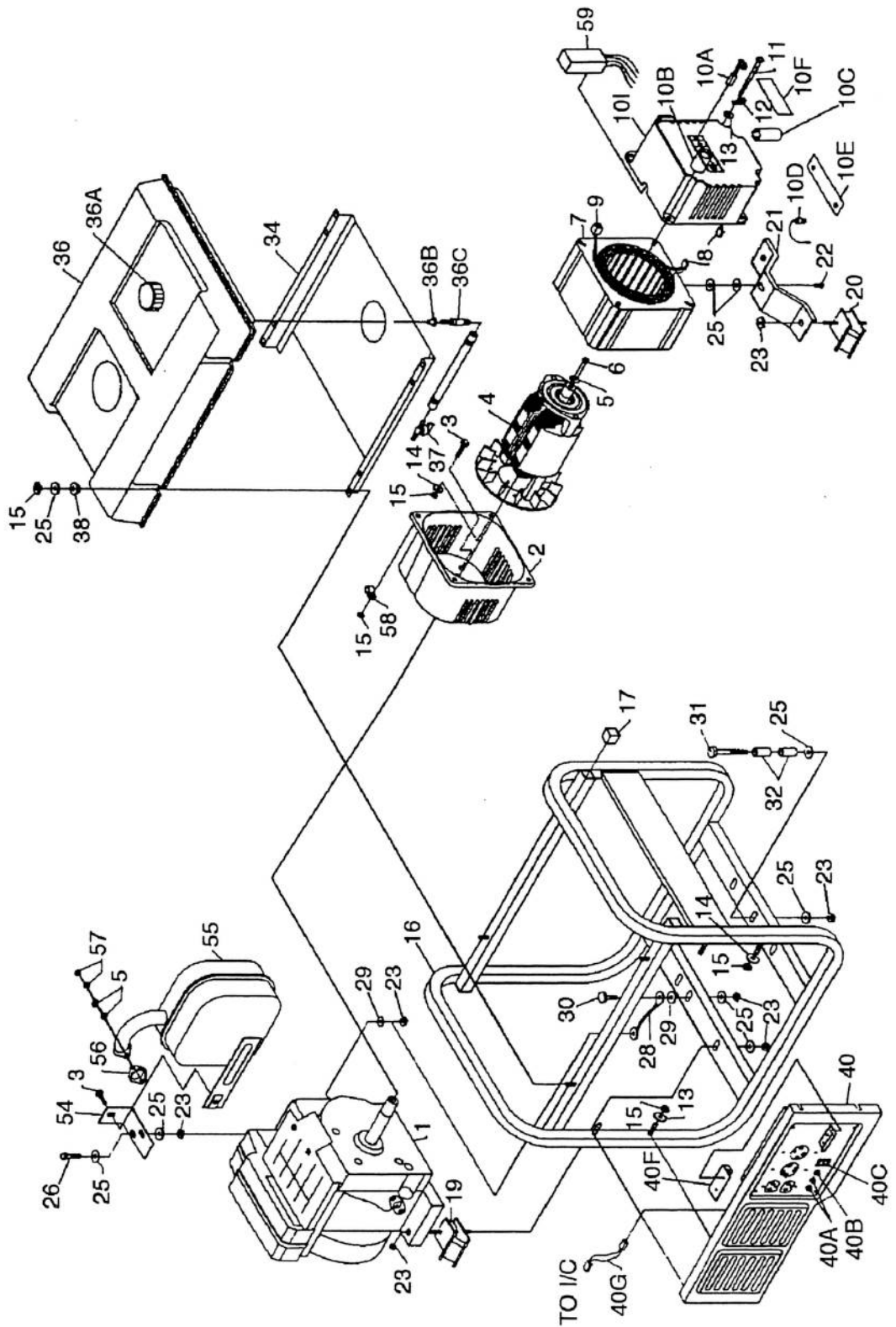


SERVICE PARTS LIST

MODEL
GEN VANTAGE 4KW IC
GEN VANTAGE 5KW IC

PART NUMBER
PC0474603.01
PC0475003



SERVICE PARTS LIST

MODEL
GEN VANTAGE 4KW IC
GEN VANTAGE 5KW IC

PART NUMBER
PC0474603.01
PC0475003

| REF. NO. | PART NO. | DESCRIPTION | MODEL NUMBER | |
|----------|------------|-------------------------------------|--------------|-----------|
| | | | PC0474603.01 | PC0475003 |
| 1 | NOTE A | ENGINE, 9 HP VANGAURD | 1 | 1 |
| 2 | 0050236.01 | ADAPTER, ENGINE | 1 | 1 |
| 4 | 0049620 | ROTOR, 5KW RF5 | 1 | 1 |
| 7 | 0050517 | STATOR, 5KW, 60HZ IC CSA | 1 | 1 |
| 8 | 0049835 | CONNECTOR, HSG. SET, ENDBELL | 1 | 1 |
| 9 | 0049200 | CONNECTOR, HSG. SET, PANEL | 1 | 1 |
| 10 | 0050511.01 | ENDBELL, WIRED COMPLETE, 47 SER CSA | 1 | 1 |
| 10A | 0050439 | BRUSH, E-4R | 2 | 2 |
| 10B | 0035188 | BEARING, NEEDLE FTT-1212 | 1 | 1 |
| 10C | 0034819.01 | CAPACITOR, 130MF | 1 | 1 |
| 10D | 0034843 | DIODE | 2 | 2 |
| 10E | 0038976 | HEAT SINK FOR DIODE | 1 | 1 |
| 10F | 0034844 | COVER, BRUSH | 1 | 1 |
| 10G | 0051080 | SHIELD, ENDBELL | 1 | 1 |
| 10H | 0051093 | TOLERANCE RING | 1 | 1 |
| 10I | 0050397 | RETAINING RING | 1 | 1 |
| 12 | 0008854 | LUG, GROUND | 1 | 1 |
| 16 | 0051560 | CARRIER, ASSY FULL | 1 | |
| 16 | 0051756 | CARRIER, ASSY FULL | | 1 |
| 19 | 0055524 | KIT ISOL ENG VIB 45 DEG 1.75 STUD | 2 | 2 |
| 20 | 0055525 | KIT ISOL ENG VIB 45 DEG .63 STUD | 2 | 2 |
| 21 | 0049693 | BRACKET, STATOR | 1 | 1 |
| 28 | 0049224 | ASSY, GROUND WIRE BRAIDED | 1 | 1 |
| 32 | 0047796 | SPACER, 3/4" | 2 | 2 |
| 34 | 0051537.01 | SHIELD, HEAT | 1 | |
| 34 | 0051821.01 | SHIELD, HEAT | | 1 |
| 36 | 0051636.01 | TANK ASSEMBLY COMPLETE | 1 | 1 |
| 36A | 0050322 | CAP, FUEL | 1 | 1 |
| 36B | 0049113 | BUSHING, FUEL | 1 | 1 |
| 36C | 0051367 | FITTING, FUEL TANK | 1 | 1 |
| 38 | 0048243 | BUSHING, STEP | 4 | 4 |
| 40 | 0050518.03 | PANEL, WIRED COMPLETE 47-4 IC CSA | 1 | 1 |
| 40A | 0049071 | CIRCUIT BREAKER, 20 AMP | 2 | |
| 40A | 0049072 | CIRCUIT BREAKER, 25 AMP | | 2 |
| 40B | 0049382 | CIRCUIT BREAKER, 30 AMP | 1 | 1 |
| 40C | 0050298 | SWITCH | 1 | 1 |
| 40F | 0050625.01 | MODULE, IDLE CONTROL | 1 | 1 |
| 40G | 0006632 | WIRE ASSY CONNECTOR | 1 | 1 |
| 51 | 0050621 | ELECTRO-MAGNET | 1 | 1 |
| 55 | 0050952 | MUFFLER, 9 HP | 1 | 1 |
| 56 | 0051634 | GASKET, MUFFLER | 1 | 1 |
| 58 | 0048147 | CLAMP, VINYL 1/2" | 1 | 1 |
| 59 | 0052627 | AUTOMATIC VOLTAGE REGULATOR (AVR) | 1 | 1 |

NOTE A: COLEMAN POWERMATE WILL NOT PROVIDE ENGINES AS REPLACEMENT PARTS. ENGINES ARE COVERED THROUGH THE ENGINE MANUFACTURER'S WARRANTY.